

Pavlov's House – Damaged End Piece

Please read the instructions before starting construction.

When opening the kit you will notice the smell of burned wood. This is because the parts are laser-cut, which literally means a very tight light beam burns through the material. You may also notice some soot at the cut edges. The amount of soot depends on the material used. You can considerably reduce it by gently wiping at least the bigger and easy to reach edges with a soft cloth or household tissue.

PVA or equivalent glue will be required to glue parts together. Give glue enough time to dry. Wipe away any excess glue immediately using a fine cloth or the tip of a toothpick. A sharp hobby knife is needed to remove parts from the sheet. Be careful and always cut away from your body. Fine sand paper may be useful to clean these areas or any tight fitting joints. Clamps, pegs and elastic bands may help during the construction of the kit. Make sure that the parts are aligned correctly before applying any of these tools.

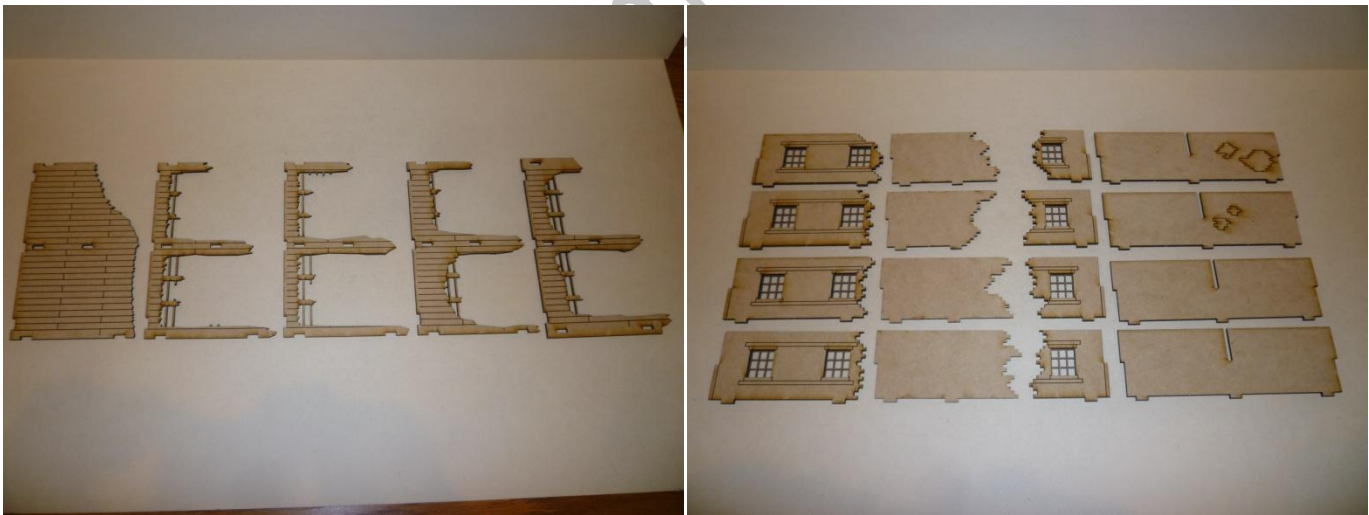
General pre-assembly preparations

You will achieve the best results in finishing this kit when you follow the steps listed below. Always double check with the provided pictures before gluing parts together and moving on to the next step.

Please keep in mind that - in general - engraved sides of parts are considered “outside”; not engraved sides are “inside” or positioned less visible once the kit is finished.

Main pieces of the building:

Floor and wall sections



Note: The walls are interchangeable – you can mix them between floor levels and flip them around (front/back) to individualize your building! Same with the floors. Only the “solid” one needs to be the 1st floor.

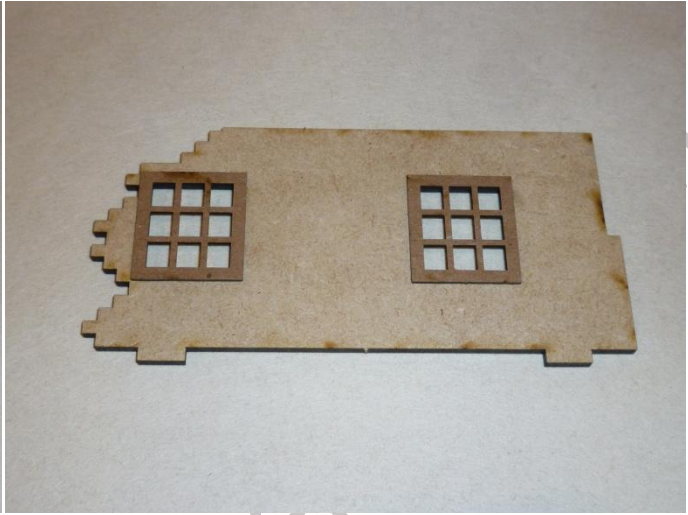
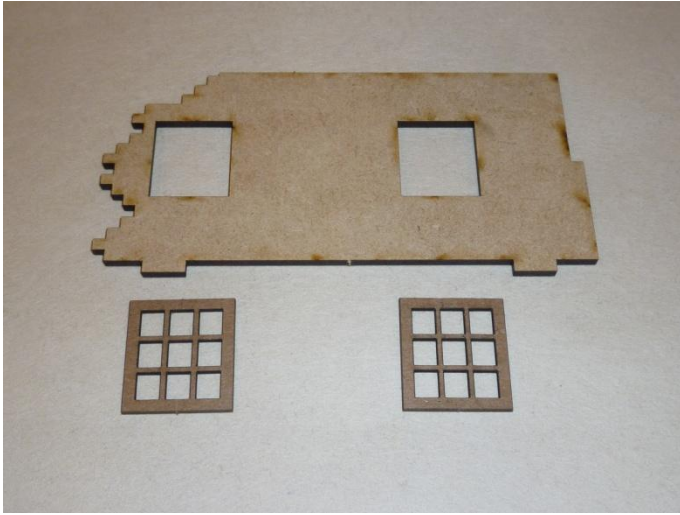
Master Builder Series



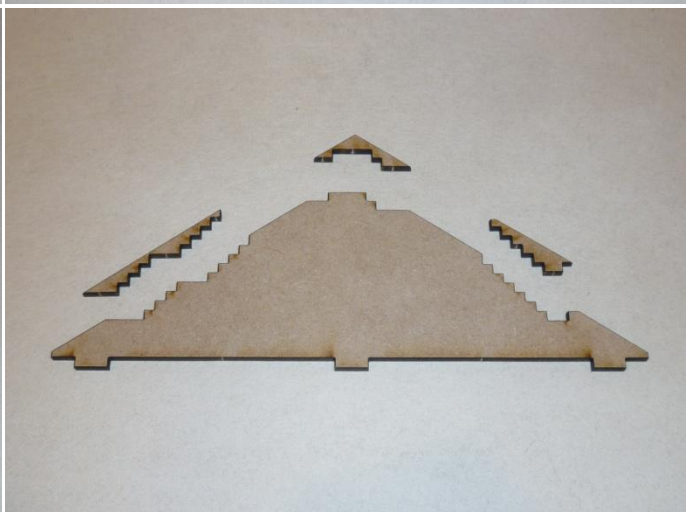
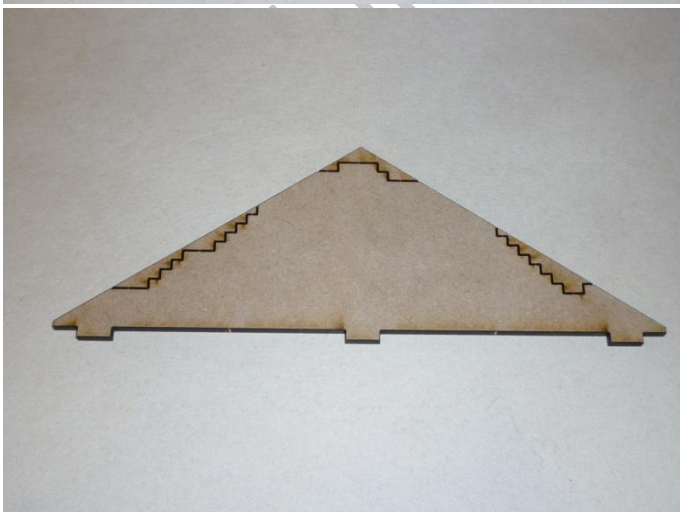
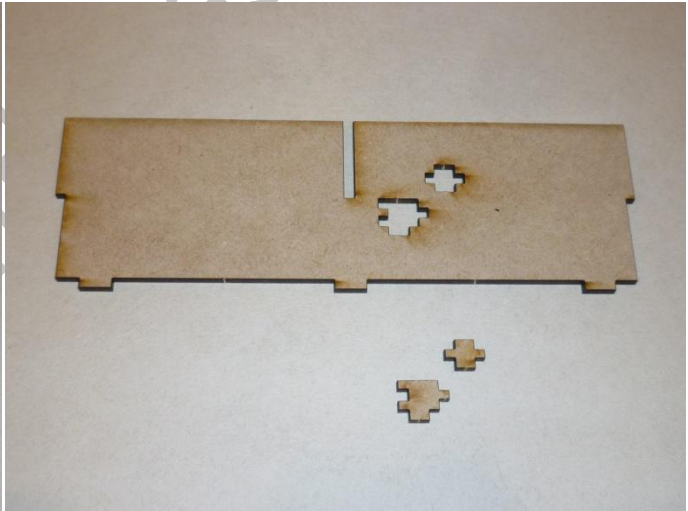
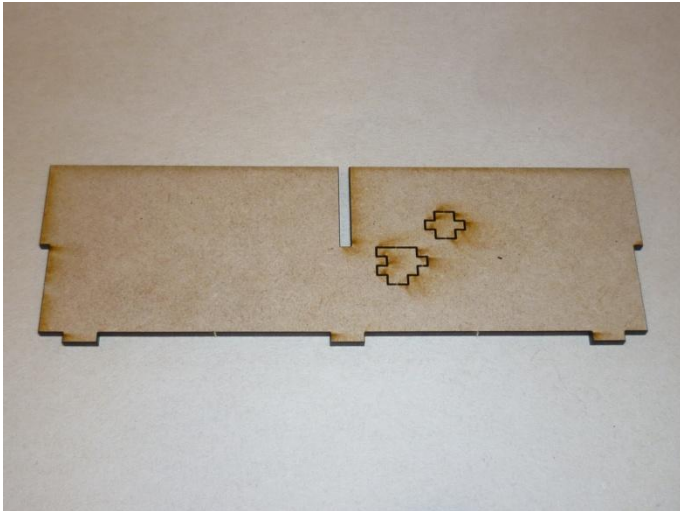
Things from the Basement, LLC
Dollhouse & Wargaming Miniatures

Preparation of walls:

Glue windows inside (i.e. **not** engraved side) of walls where openings are. Do so for all walls!



Cut out the damaged wall pieces where desired. Keep the cut-outs as rubble when finishing the building!



Master Builder Series

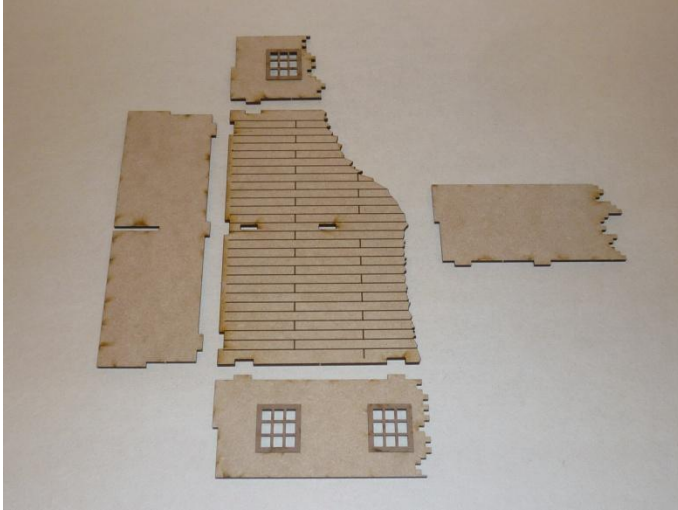


Things from the Basement, LLC
Dollhouse & Wargaming Miniatures

Assembly:

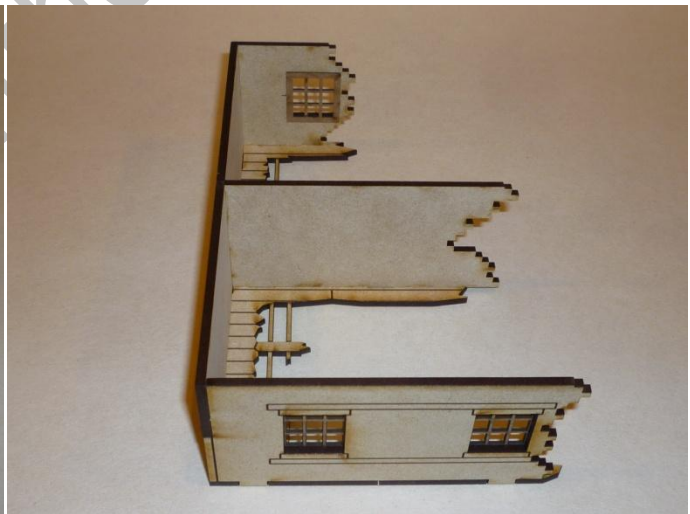
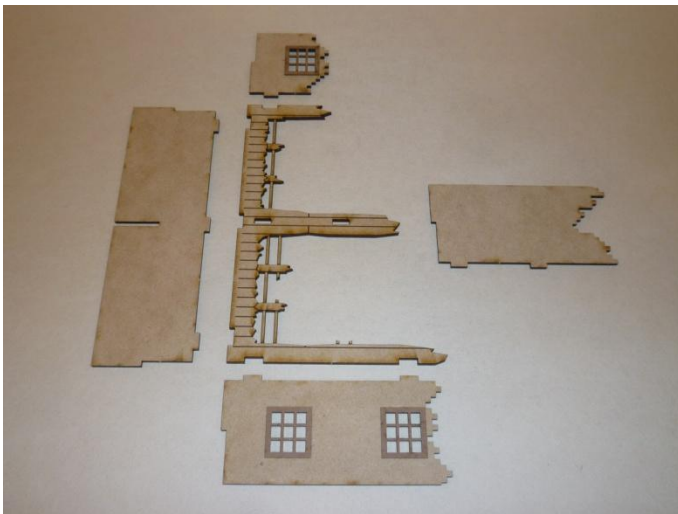
1st floor:

Glue pieces together as shown. Set aside and let dry. Use clamps or elastics to hold pieces in place.



2nd, 3rd and 4th floor:

Glue pieces together as shown. Set aside and let dry. Use clamps or elastics to hold pieces in place.



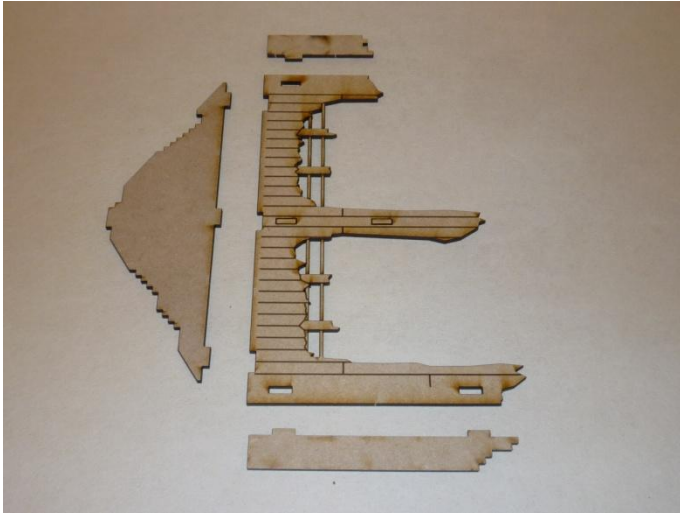
Master Builder Series



Things from the Basement, LLC
Dollhouse & Wargaming Miniatures

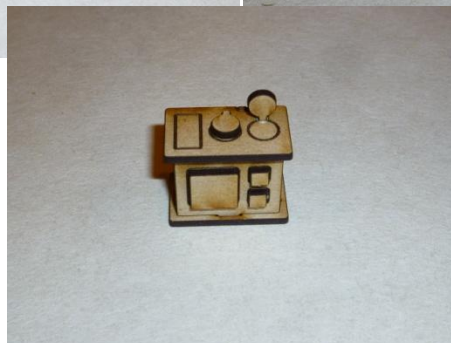
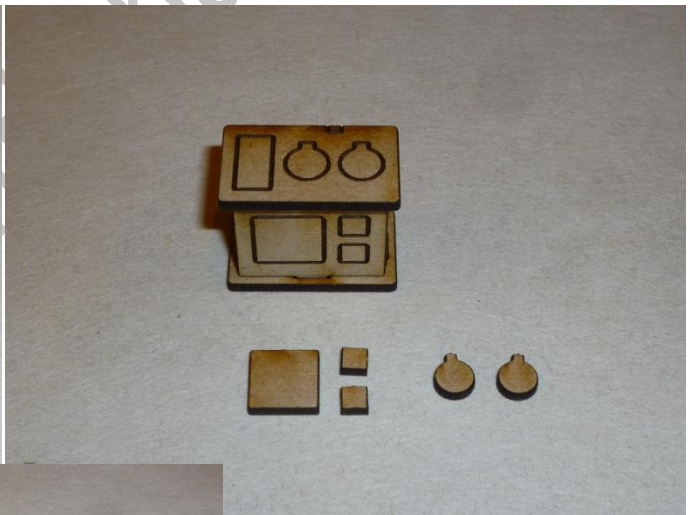
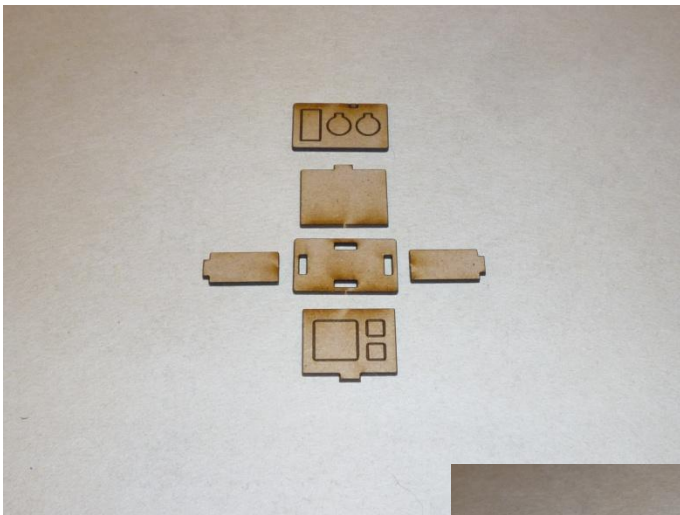
Attic/roof:

Glue pieces together as shown. Set aside and let dry. Use clamps or elastics to hold pieces in place.



Oven/kitchen range:

Glue oven together as shown. Then add lids and doors.

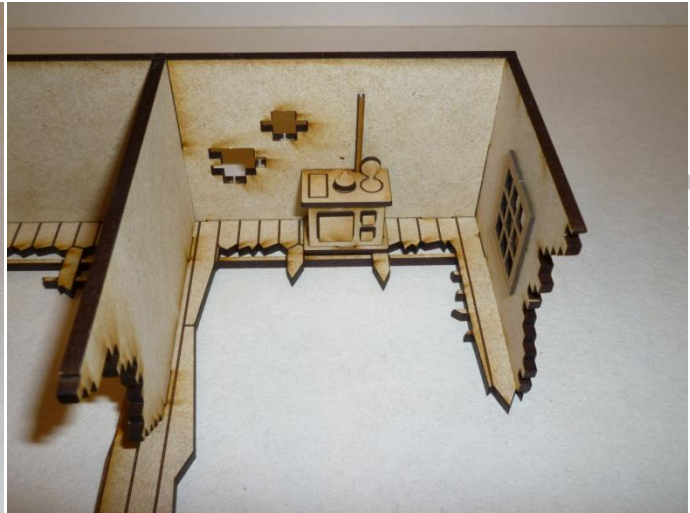
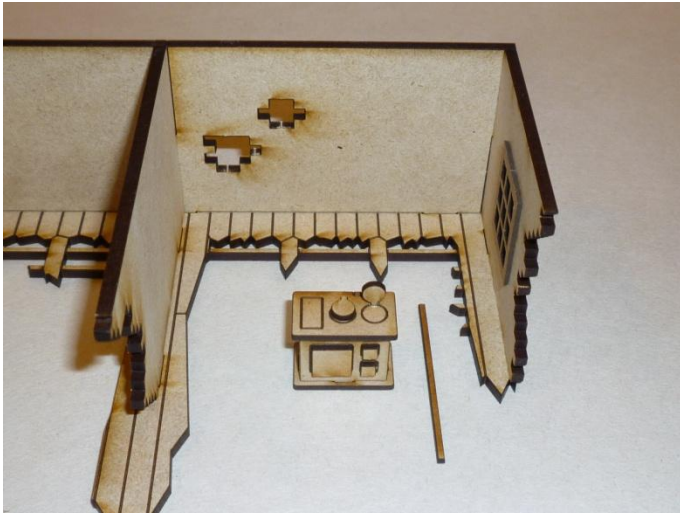


Master Builder Series

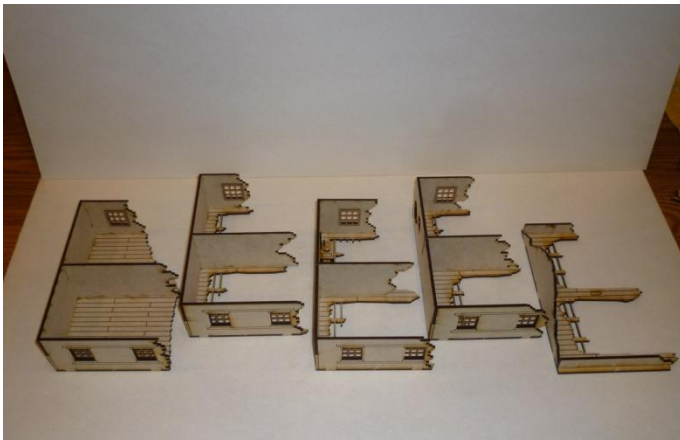


Things from the Basement, LLC
Dollhouse & Wargaming Miniatures

Glue oven in place and add stovepipe.



Glue floors together. Make sure all sides are aligned correctly! Set aside and let dry thoroughly.



Master Builder Series



Things from the Basement, LLC
Dollhouse & Wargaming Miniatures

Rafters/roof:

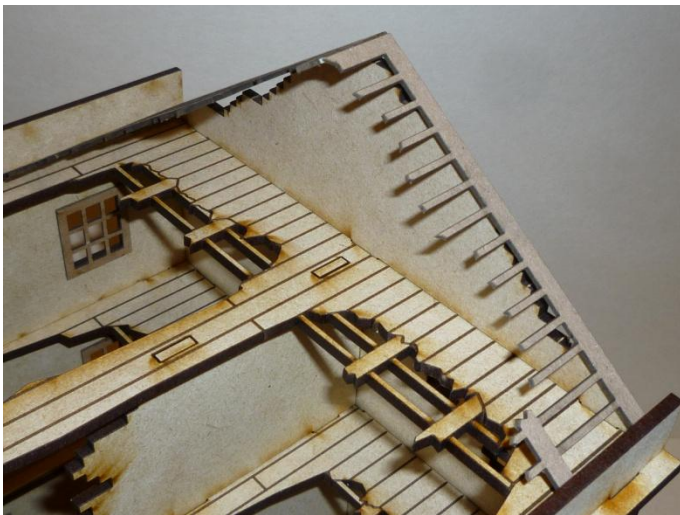
Front (when watching at the balcony front)

Glue rafter on front side of roof walls. You can choose any rafter for this or individualize one by just cutting it into the desired shape. The chipboard can easily be cut with a hobby knife or scissors.



Back

Glue rafter on back side of roof walls.



Final Stuff:

Use the shingle strips to finish the roof. Cut out individual shingles around the damaged roof sections.

Use the cut out pieces of the damaged walls as rubble. Add individual bricks provided with the kit. Add the additional rafters - cut as desired - to achieve a more realistic look.

If you ever experience problems or difficulties in finishing this kit don't become desperate! Just send me an email at thingsfromthebasement@gmail.com and I will help you get it done. Having designed the kit and then providing an instruction for everyone to understand is probably the hardest part of the whole project. I am ready for every kind of feedback to improve kit and instructions. I just need to know!



Master Builder Series

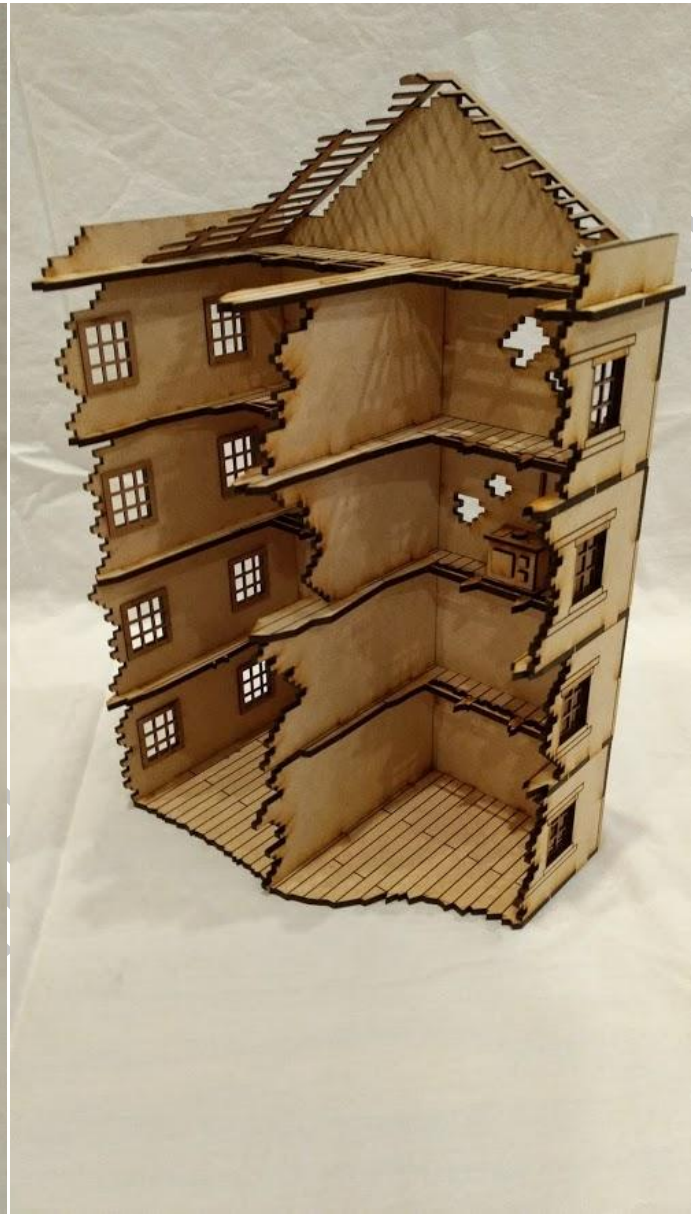
Photos of finished kit:



Master Builder Series



Things from the Basement, LLC
Dollhouse & Wargaming Miniatures





Historical Background and Photos



PAVLOV'S HOUSE

Sergeant Yakov Pavlov received a simple order, "Not one step back." It was an order he intended to keep.

Very few battles in human history can compare to the epic proportions of carnage at Stalingrad. Two ideological empires fought for survival in a hailstorm of blood and steel that lasted for months and marked a turning point in the course of WWII.

The grinding war of attrition begun in July of 1942. Despite ferocious resistance, by September, German forces crawled their way to banks of Volga, leaving in Russian hands only pockets of resistance. A four-story apartment block overlooking the "9th January Square", parallel to the river and occupied by Sergeant Yakov Pavlov, was one such pocket.

Sergeant Yakov Pavlov's platoon took possession of the building by violently driving out the German invaders but in the process there were casualties. In fact, of the 30 man platoon, only 4 soldiers survived. The lieutenant was dead, all senior sergeants were dead, and Pavlov was the highest ranking of four survivors. There were also 10 Russian civilians who had been trapped in the basement by the fighting. They were still unable to escape as the apartment remained surrounded by German troops.

Pavlov was determined to follow the order "Not one step back" and the Russian soldiers proceeded to fortify their position. A few days later reinforcement arrived, boosting their numbers to 25 soldiers and the 10 civilians. They surrounded the building with barbed wire and mines, breached walls to create channels of communications, barricaded doors and windows and installed machine guns, and indeed, never took a step back. They managed to defend the building for two straight months, from 23 September until 25 November.

Pavlov and his men fought off countless attacks. Germans assaulted the building several times each day, trying to take it by infantry or armor. But the Germans were at a disadvantage, they had to charge across the open space of "9th January Square." Pavlov's men met them each time with a deadly barrage of rifle and anti-tank fire, decimating the attackers. They say that they had to use lulls in the fighting to run out and kick over the heaped piles of German corpses so they could not be used as cover for the next round of attackers. The Germans lost more men trying to take this apartment block than they did when taking Paris. The house was marked as fortress on German maps.

Both the soldier and the civilians survived the two month siege and were finally ferried to safety by counter-attacking Russian troops.

Pavlov's House, as it is now known, was rebuilt and returned to its original purpose after the war. The east side of the building, the side facing the river, was rebuilt by original bricks collected after the battle. It serves as a memorial of the resistance on a place where Hitler's war machine ground to a halt due to one man's determination to take "not one step back."

commons.wikimedia.org/wiki/File:Dom_Pavlova_Volgograd



PAVLOV'S HOUSE- HISTORICAL PHOTO RECORD



Photos: Stalingrad Panoramic Museum