

## Hirado Dutch Trading Post

Please read the instructions before starting construction.

When opening the kit you will notice the smell of burned wood. This is because the parts are laser-cut, which literally means a very tight light beam burns through the material. You may also notice some soot at the cut edges. The amount of soot depends on the material used. You can considerably reduce it by gently wiping at least the bigger and easy to reach edges with a soft cloth or household tissue.

PVA or equivalent glue will be required to glue parts together. Give glue enough time to dry. Wipe away any excess glue immediately using a fine cloth or the tip of a toothpick. A sharp hobby knife is needed to remove parts from the sheet. Be careful and always cut away from your body. Fine sand paper may be useful to clean these areas or any tight fitting joints. Clamps, pegs and elastic bands may help during the construction of the kit. Make sure that the parts are aligned correctly before applying any of these tools.

### General pre-assembly preparations

You will achieve the best results in finishing this kit when you follow the steps listed below. Always double check with the provided pictures before gluing parts together and moving on to the next step.

Please keep in mind that - in general - engraved sides of parts are considered "outside"; not engraved sides are "inside" or positioned less visible once the kit is finished.

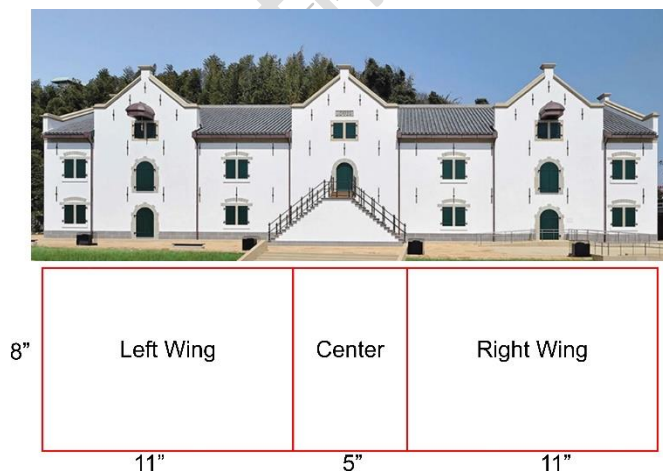
**Note:** The pictures of these assembly instructions were taken with parts of the kit already being painted!

### Assembly

The below image shows an overview of the layout of the building. It consists of three main parts:

Left wing, center, and right wing. Not included in the overview are the main staircase and the light beacon.

Construction of the left wing and right wing are identical; the right wing is just a mirrored version. All pictures shown for the assembly of the two wings are taken with parts of the left wing!

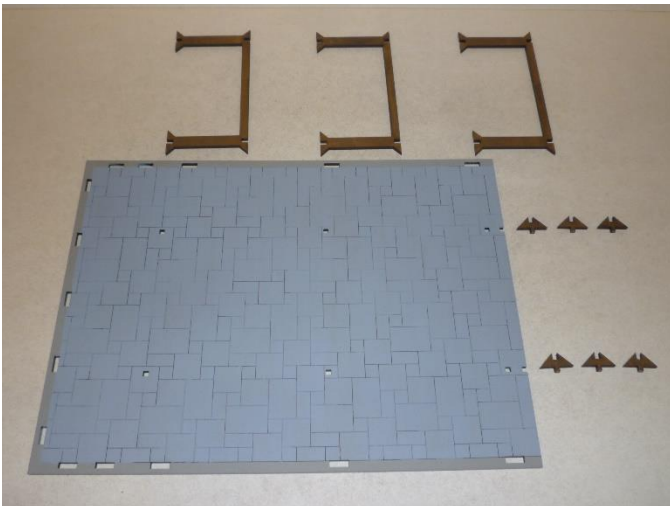


# FEUDAL JAPAN

## 1. Interior stairs - Build 5 times!



## 2. Left Wing



## 3.



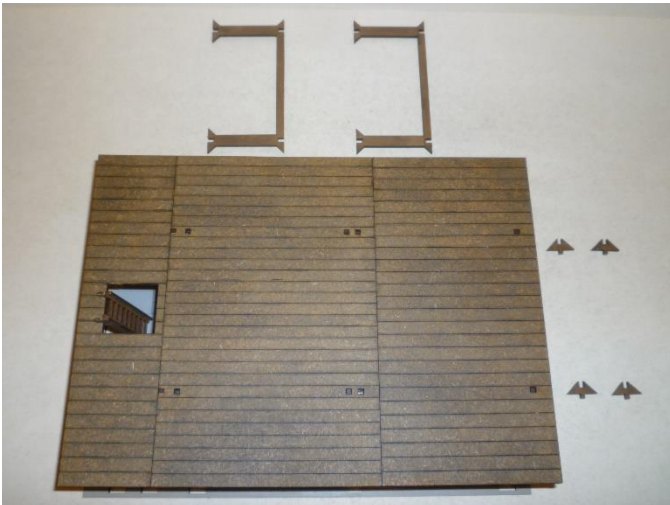


# FEUDAL JAPAN

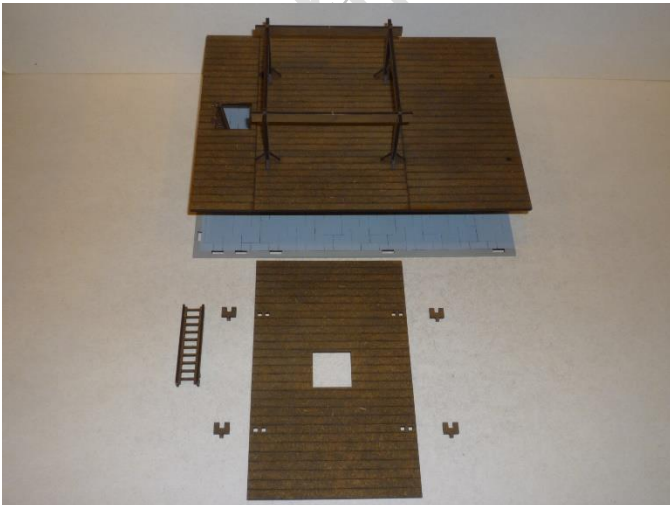
4.



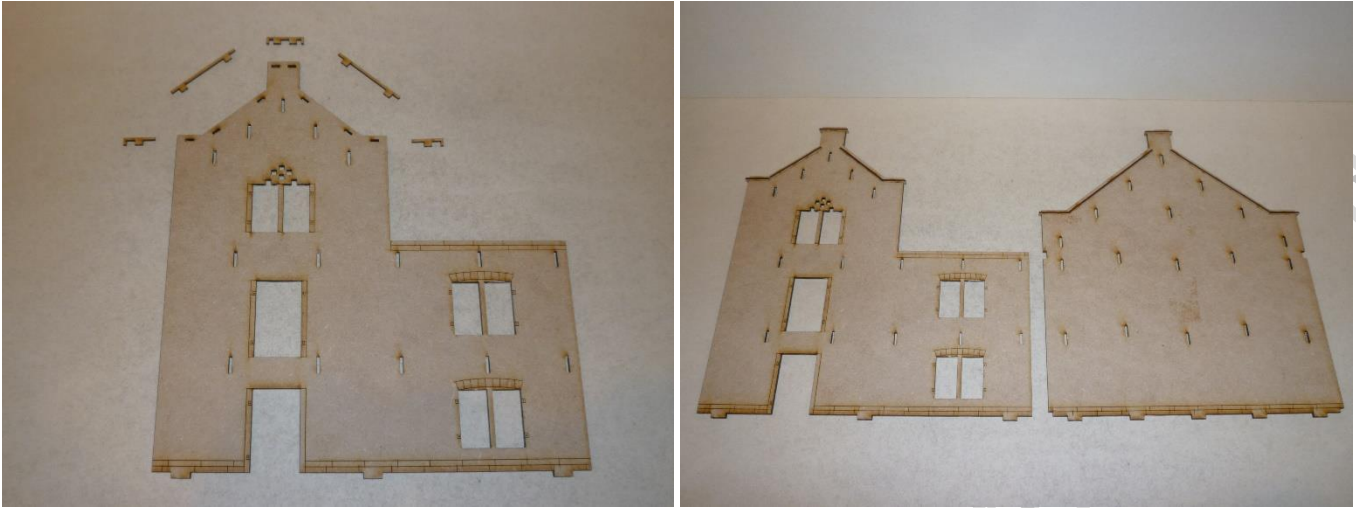
5.



6.



7.



8. Let dry thoroughly!



## 9. Moveable doors

Glue lower frame piece in wall opening from outside!

Insert lower door pin in frame hole. Do **NOT** glue!

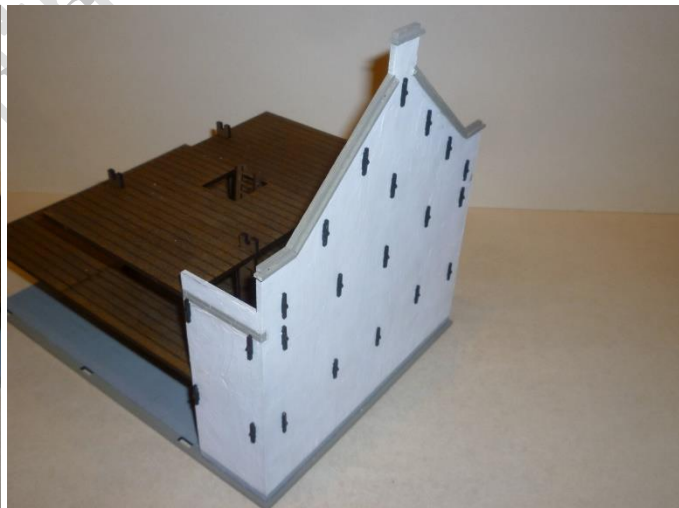
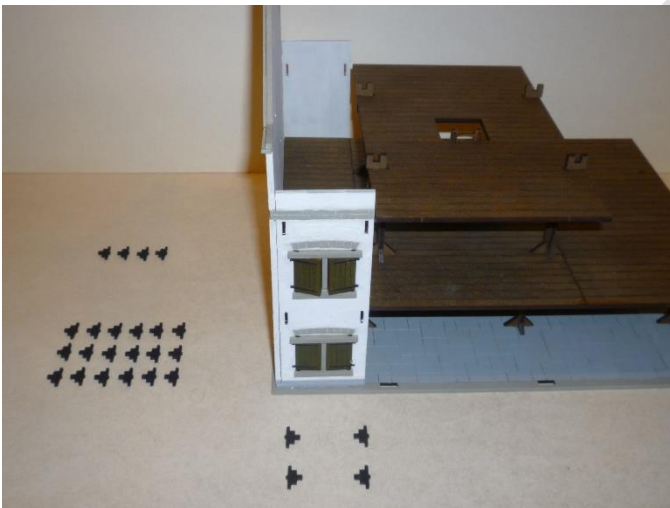
Insert upper door pin in frame hole. Do **NOT** glue!

Glue upper frame piece in wall opening from outside!

Tweezers and the Spot-On PVA Glue Applicator may come in handy.

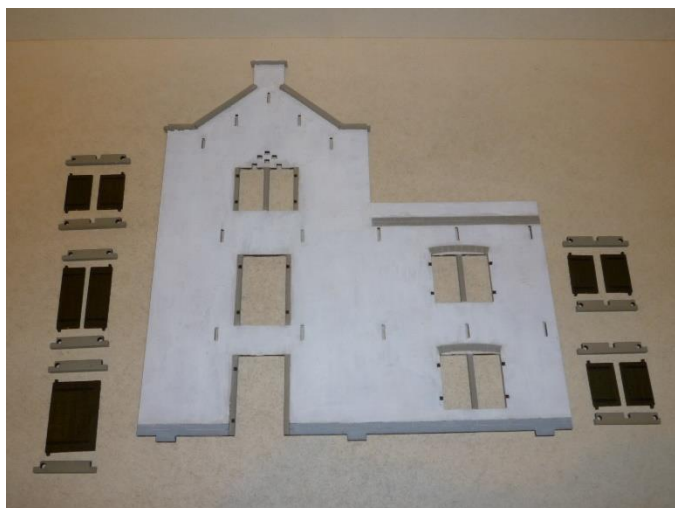


## 10.





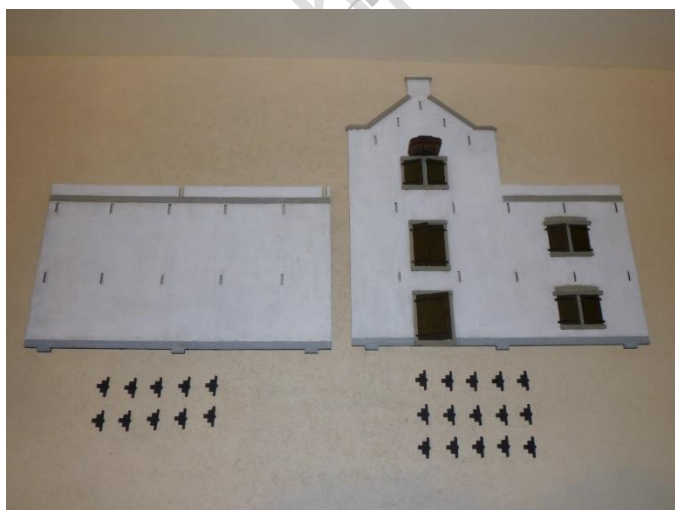
## 11. Moveable doors (see step # 9 for assembly)



## 12.

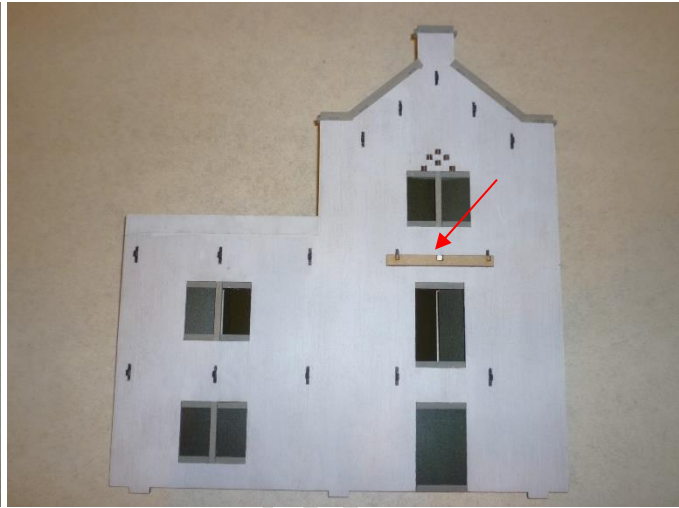
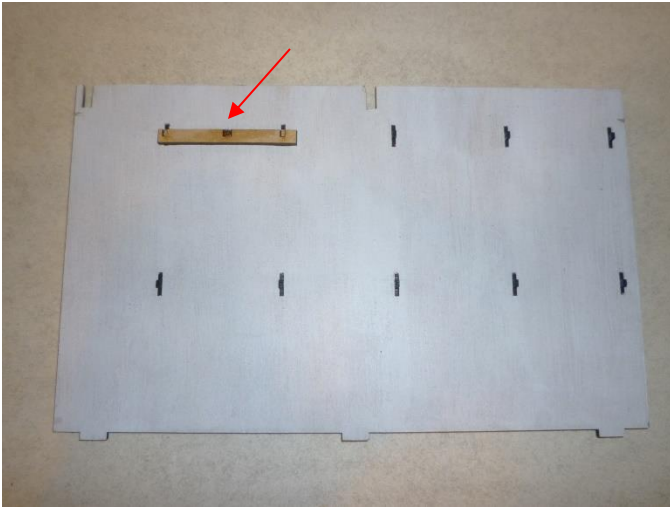


## 13.



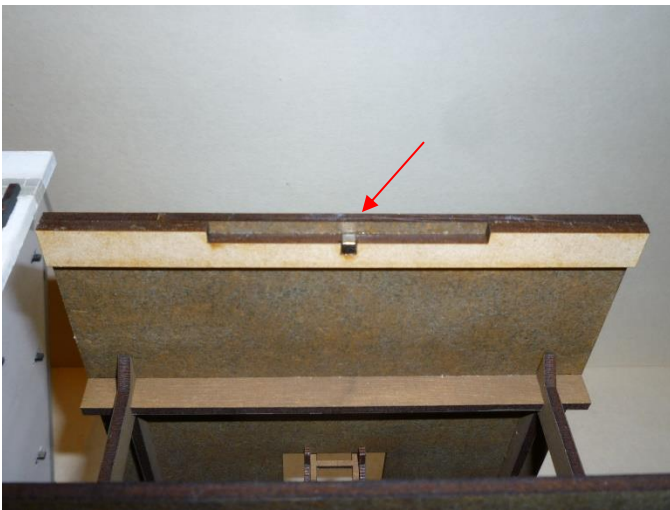
## 14. Magnetizing removable walls

Glue support beam to wall at indicated location, then add magnet (red arrow)

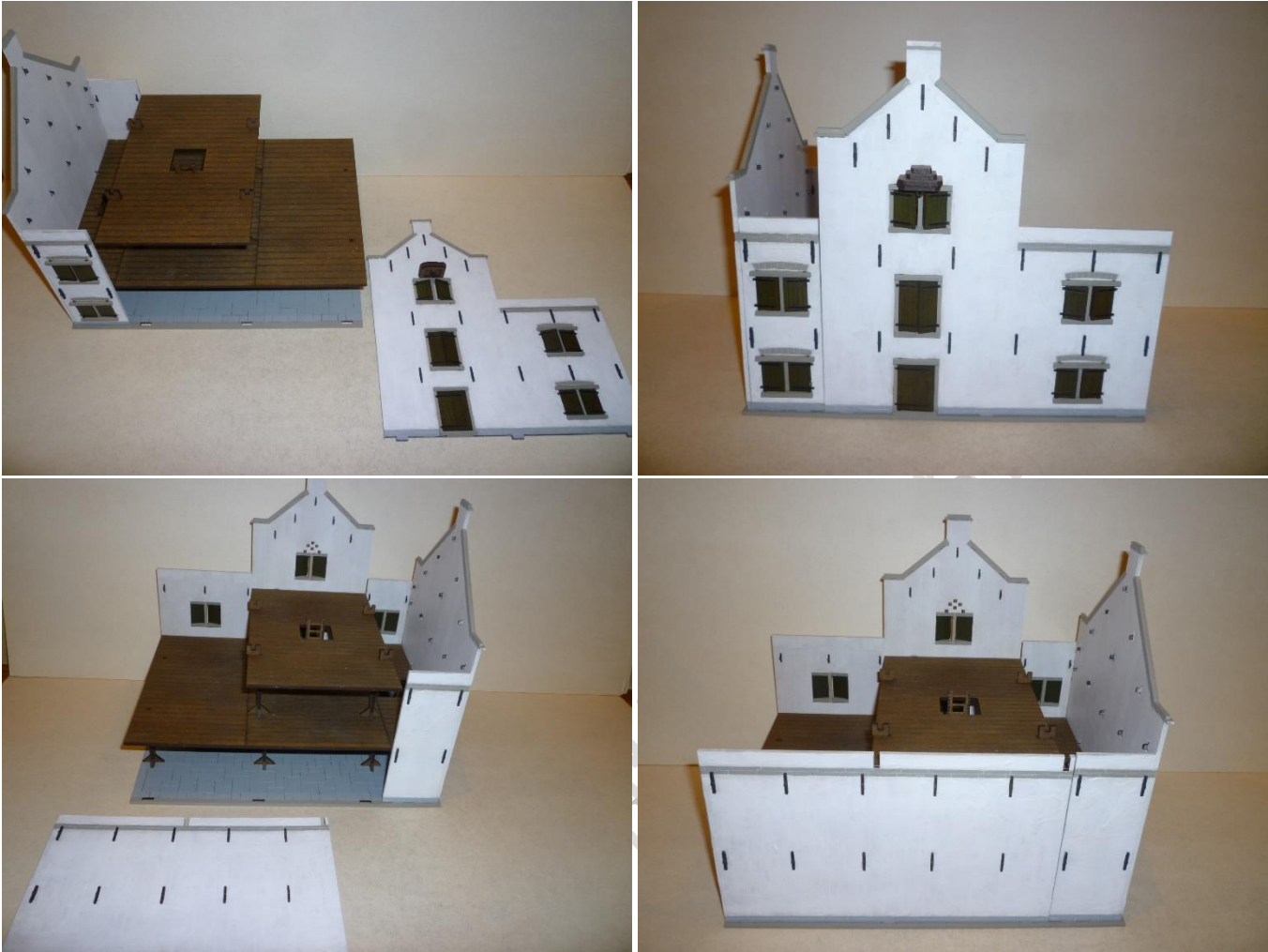


## 15.

Glue support beam to wall at indicated location, then add magnet (red arrow)



## 16. Magnetized removable walls



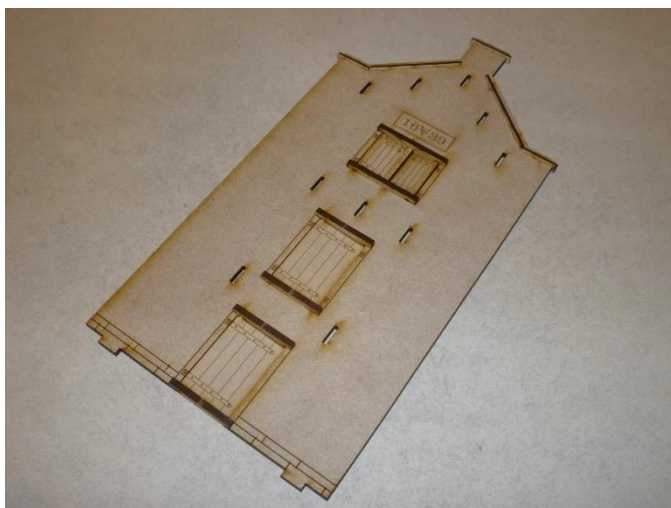
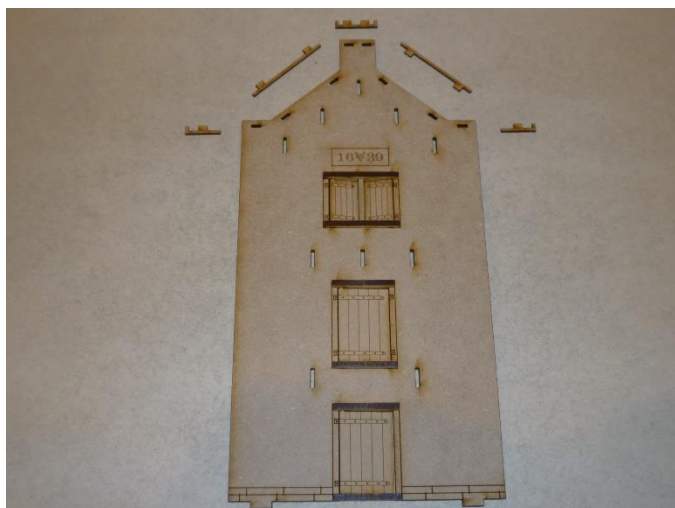
## 17. Repeat steps # 2 to # 16 for Right Wing!

## 18. Center

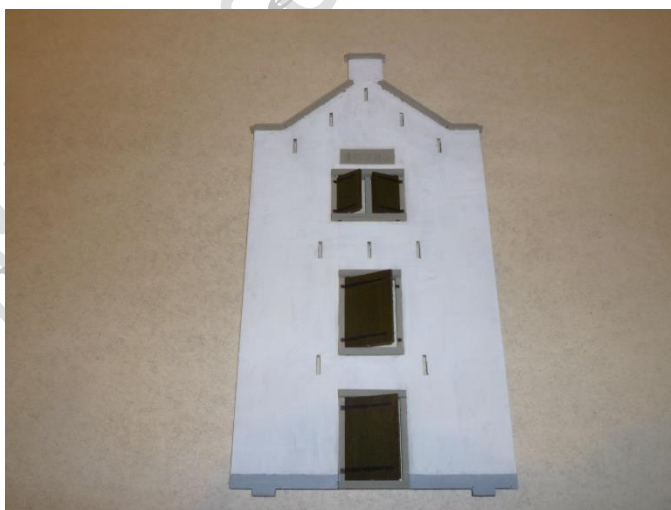
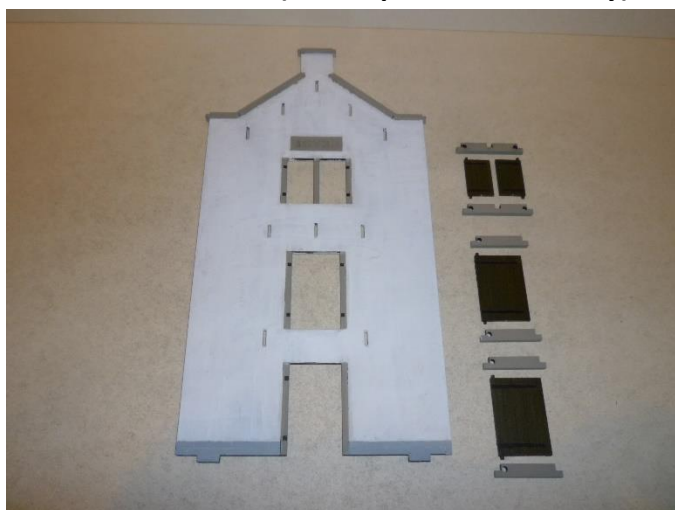
Follow steps #2 to # 6 along the lines of the construction of the floors



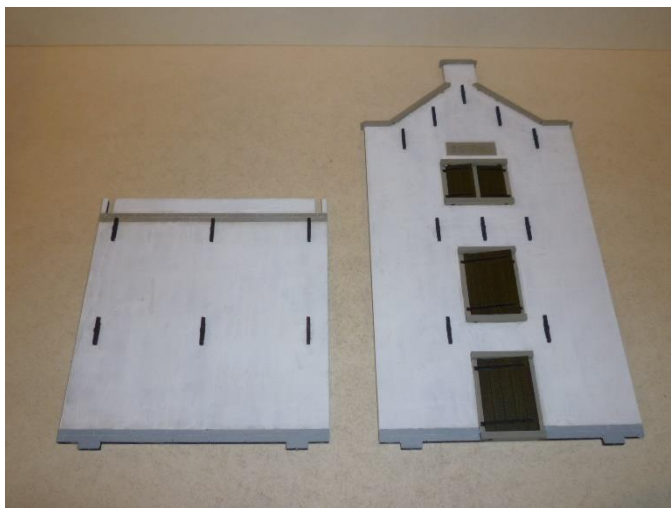
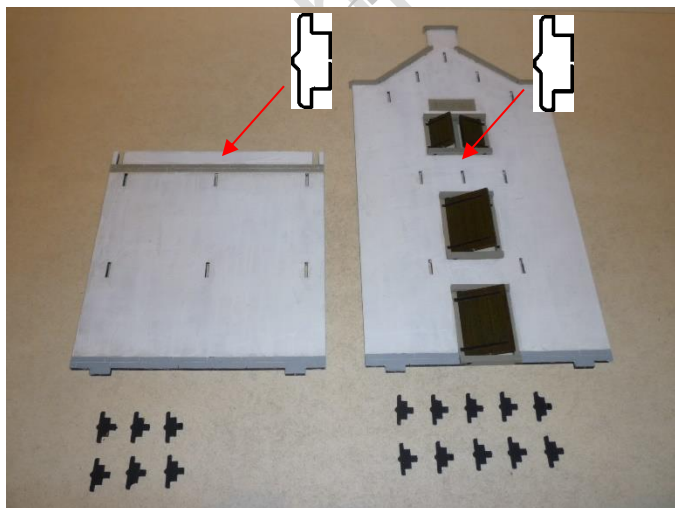
19.



20. Moveable doors (see step # 9 for assembly)

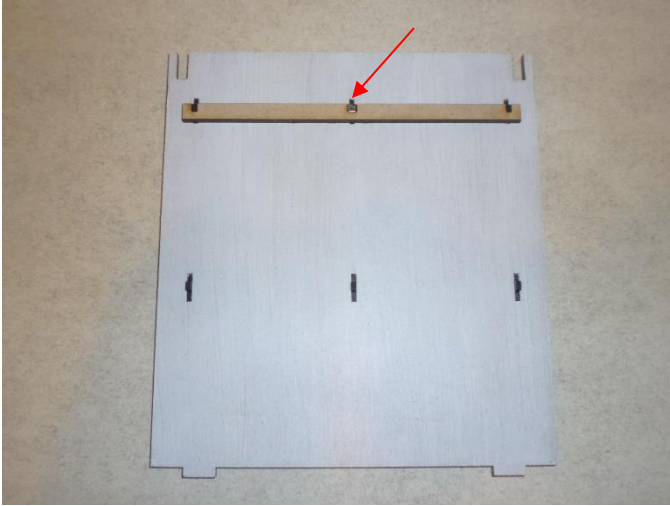


21. Use bracket without long peg in center position (red arrow)!



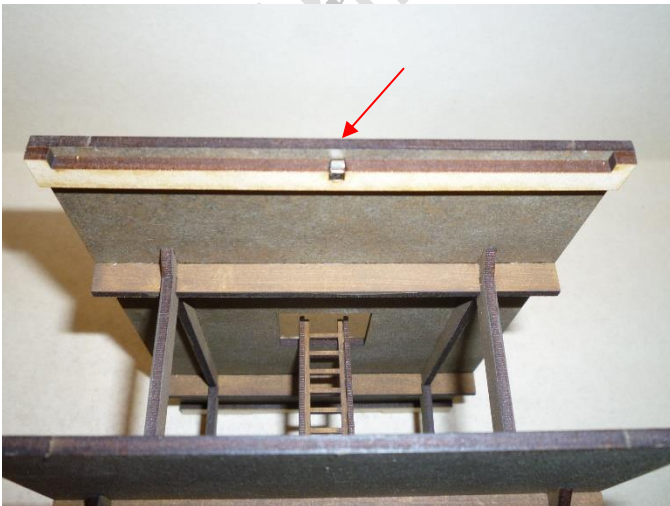
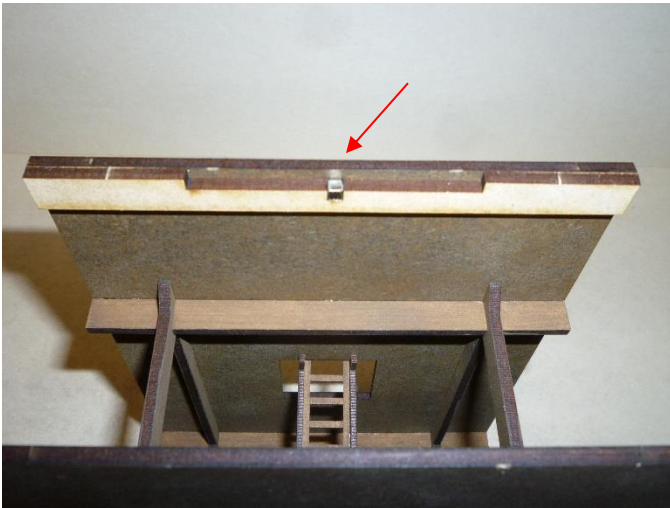
## 22. Magnetizing removable walls

Glue support beam to wall at indicated location, then add magnet (red arrow)



## 23.

Glue support beam to wall at indicated location, then add magnet (red arrow)

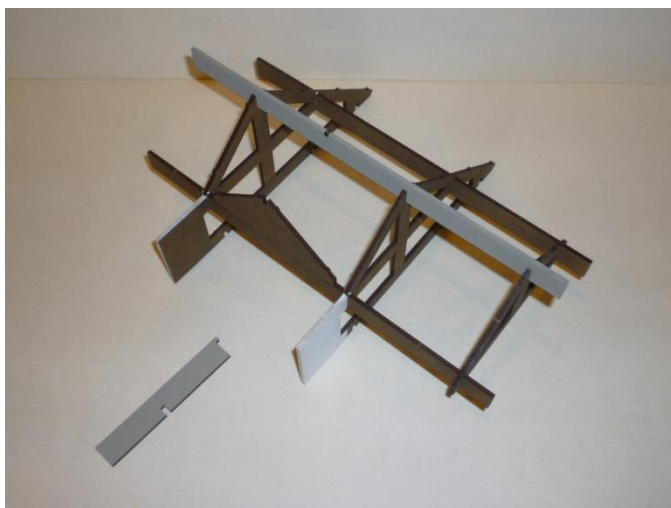
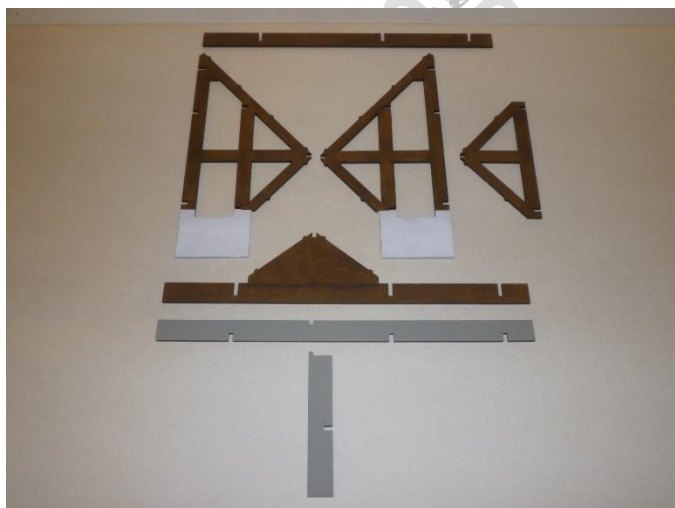




## 24. Magnetized removable walls



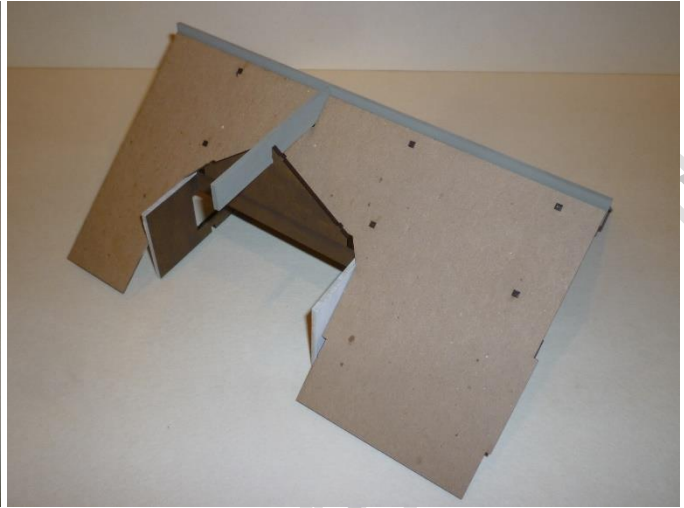
## 25. Roof section Left Wing



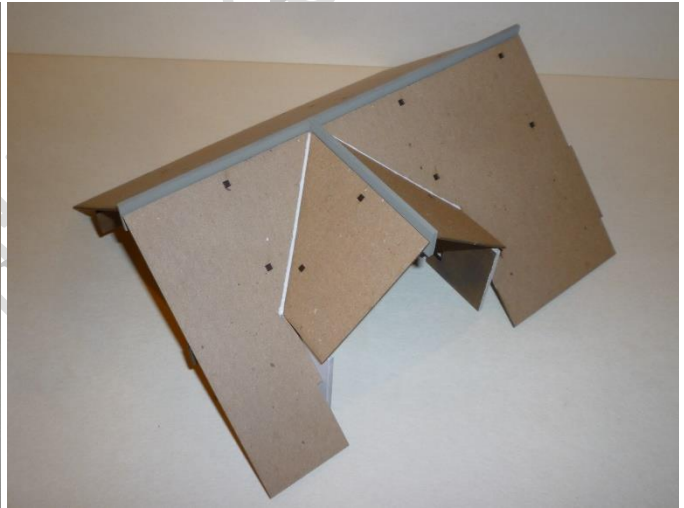
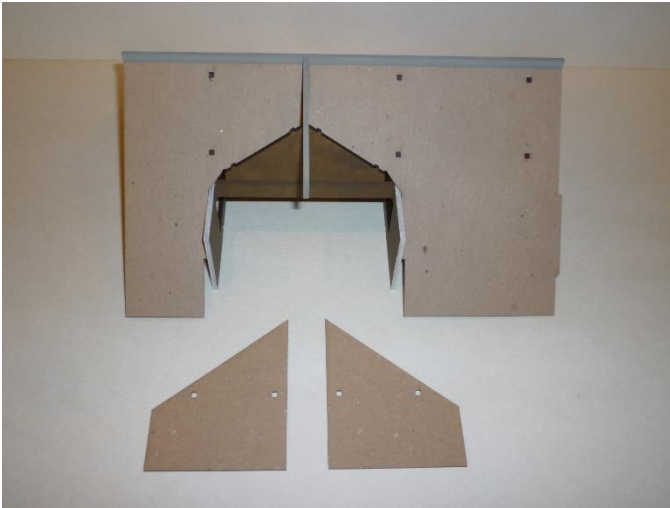


# FEUDAL JAPAN

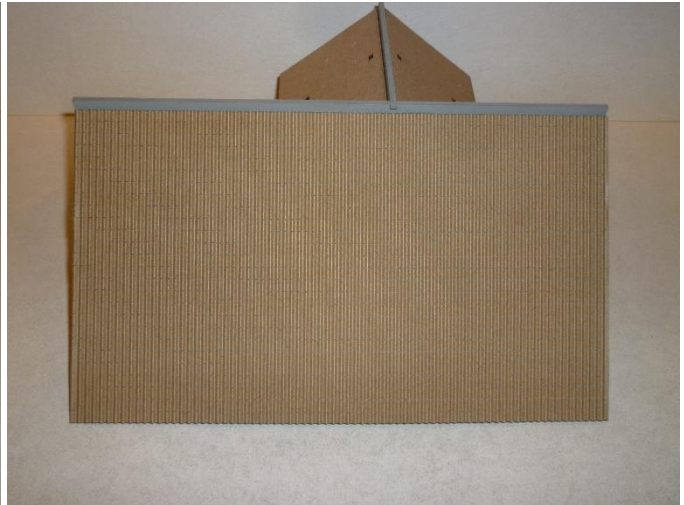
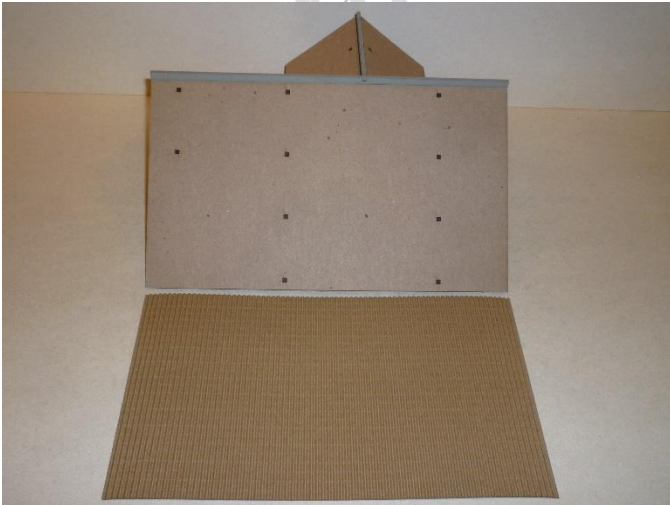
26.



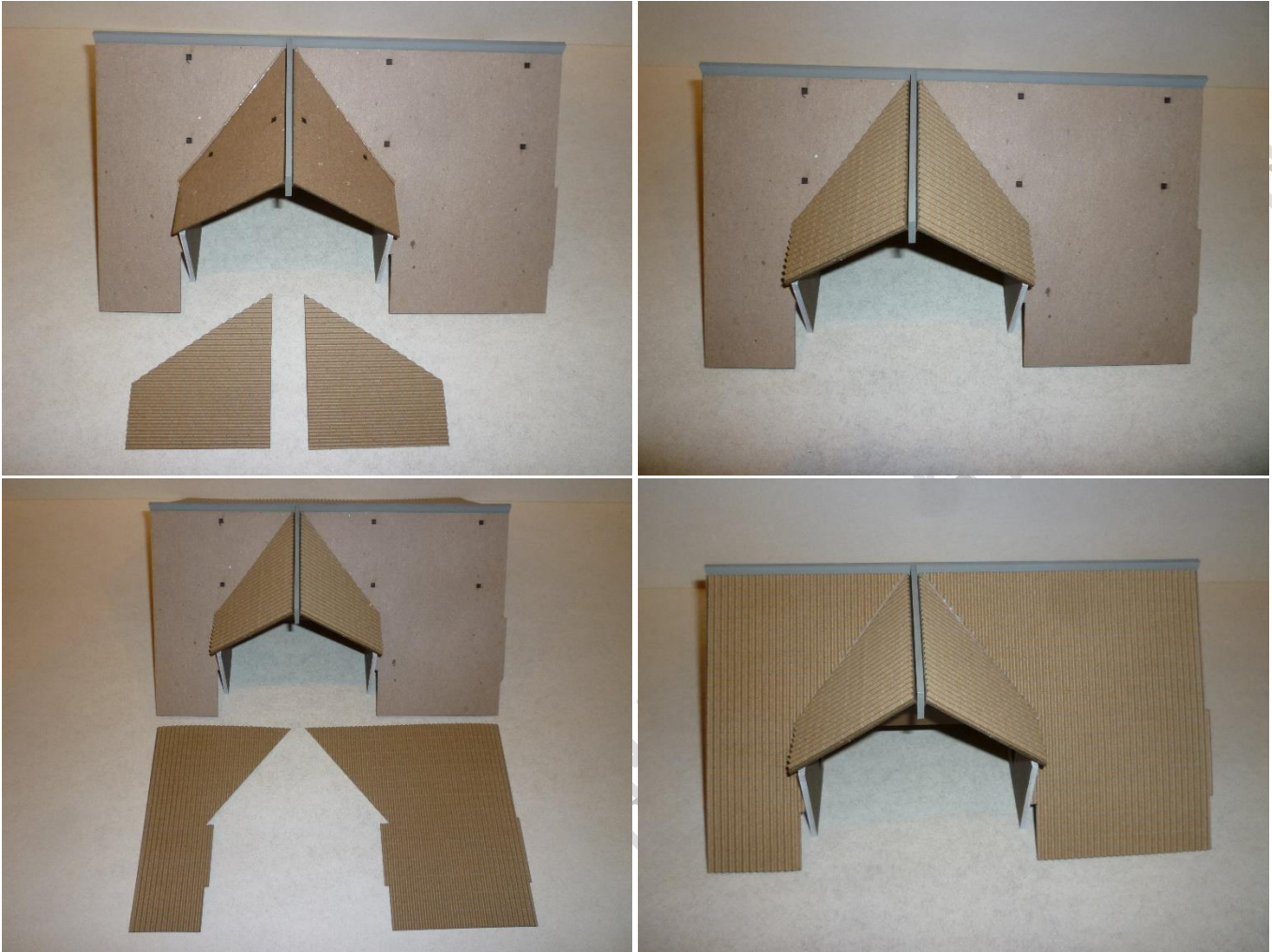
27.



28.



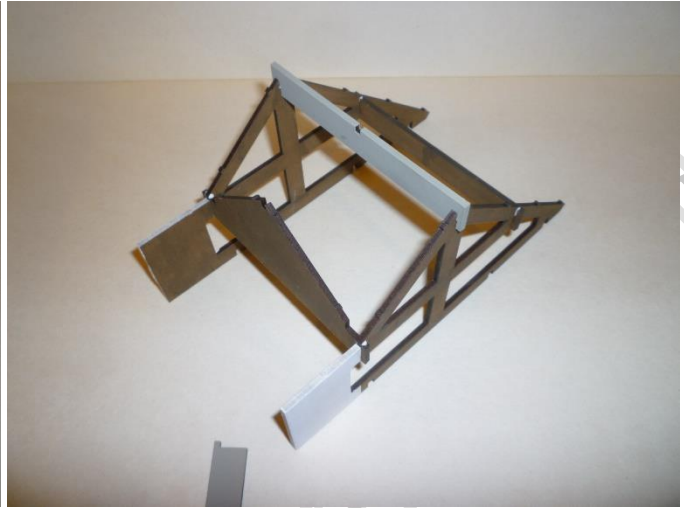
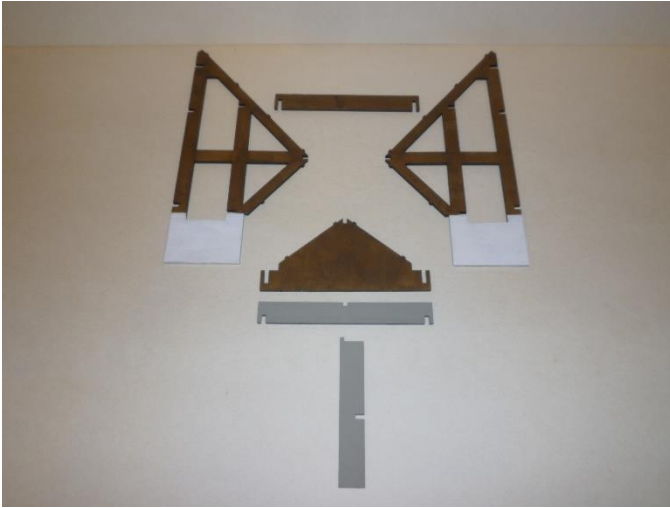
29.



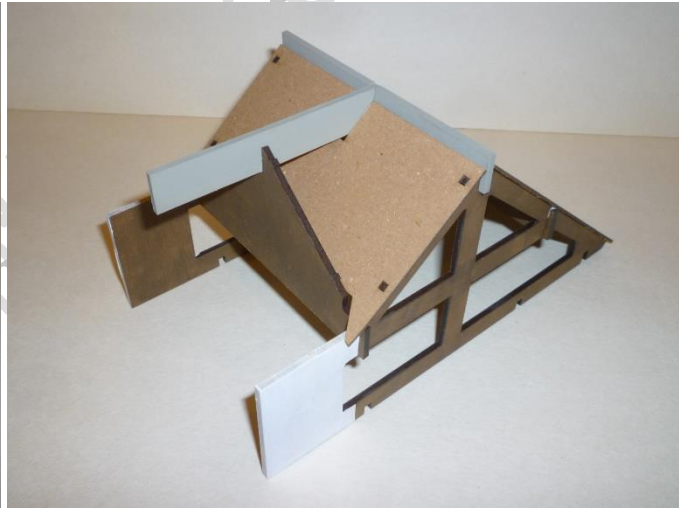
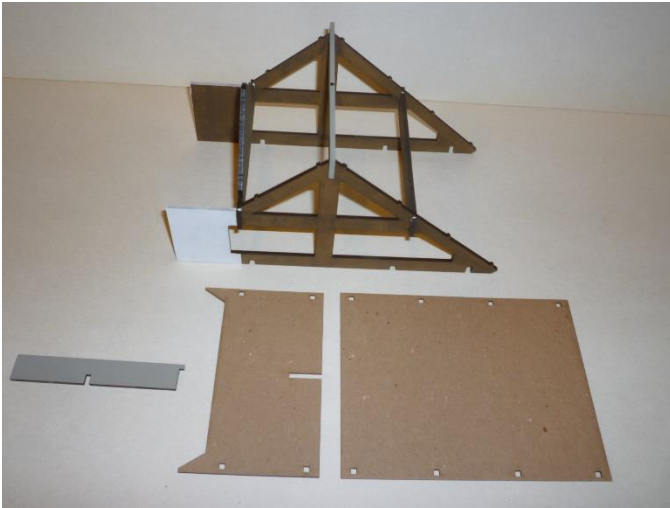
30. Repeat steps # 25 to # 29 for Right Wing roof section!



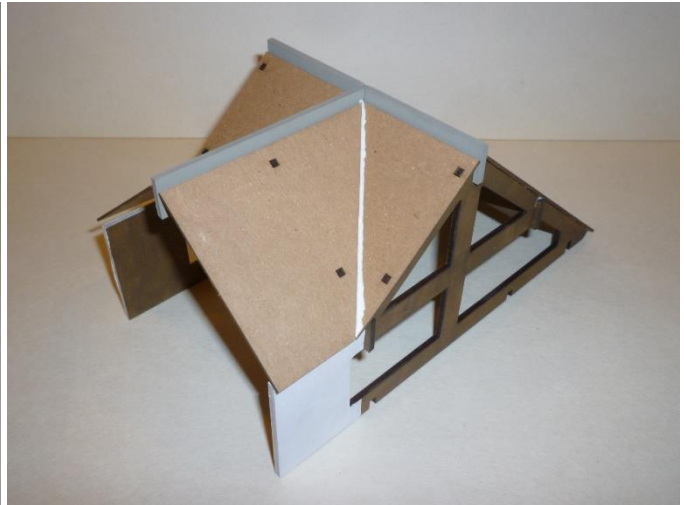
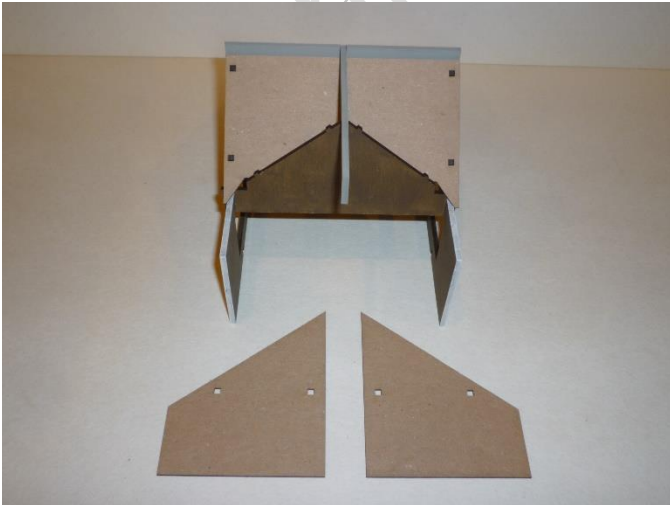
## 31. Roof section Center



## 32.

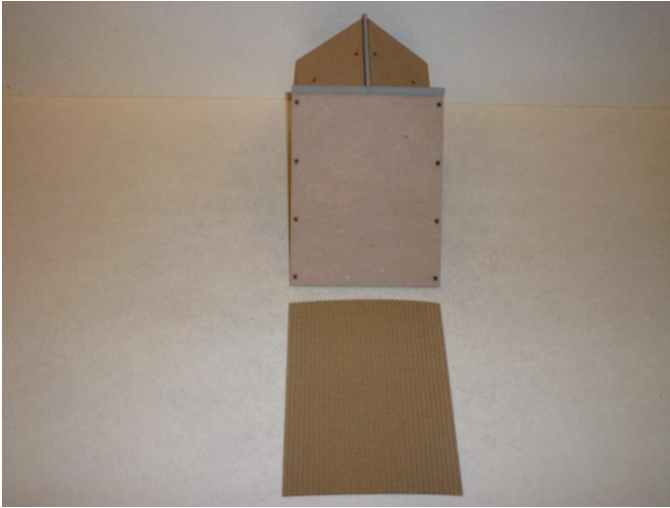


## 33.

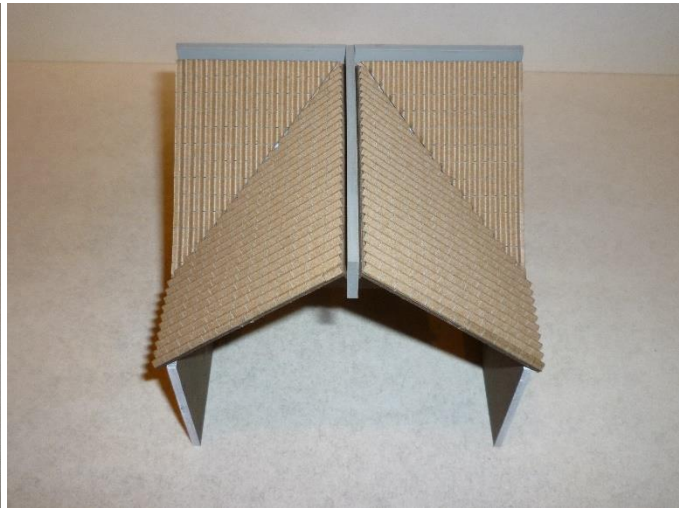
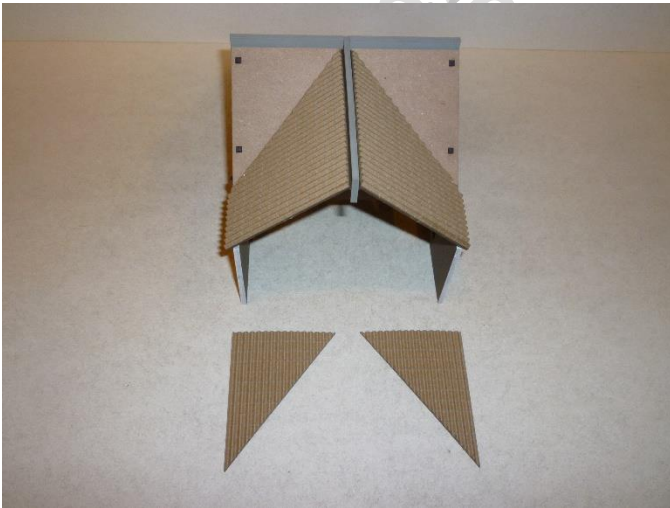
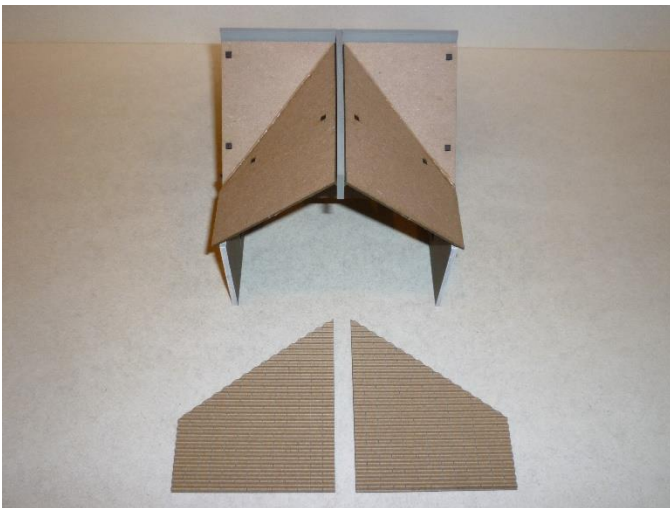




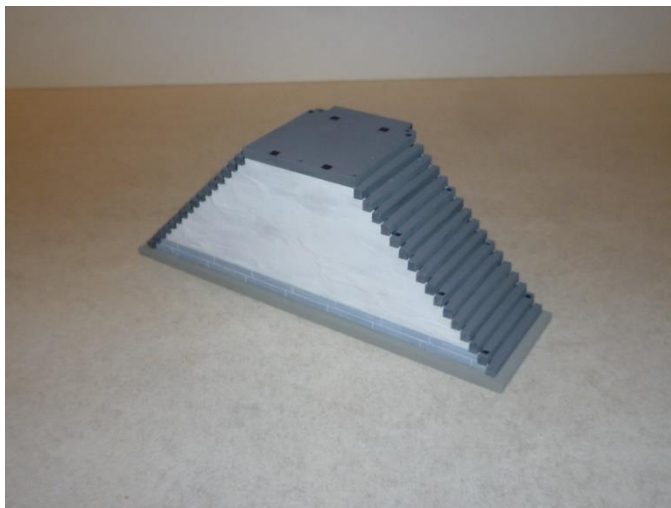
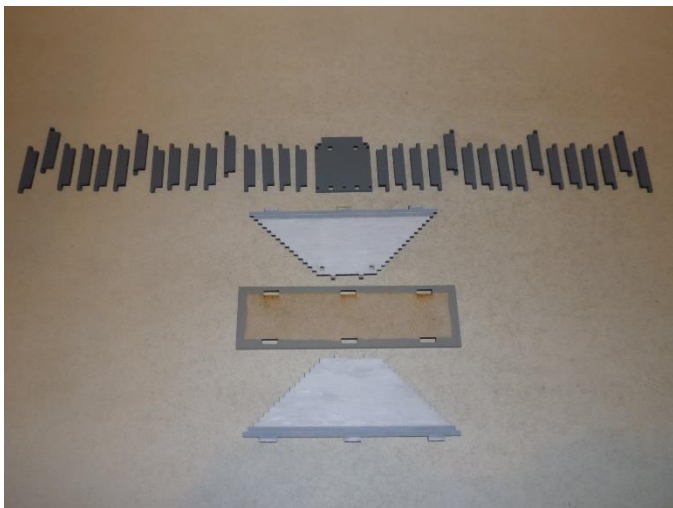
34.



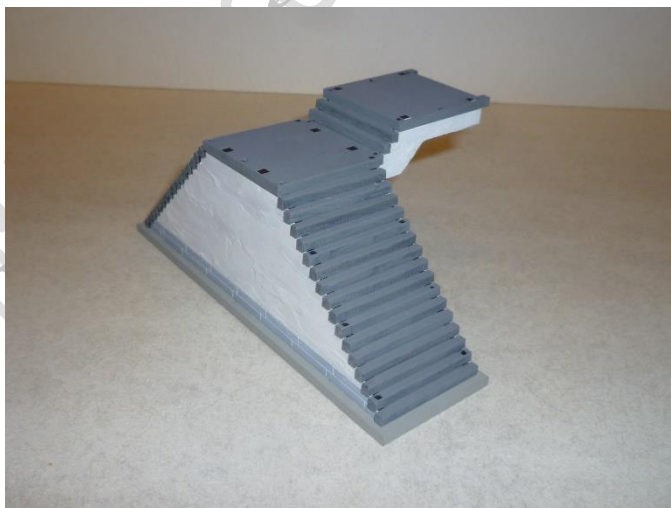
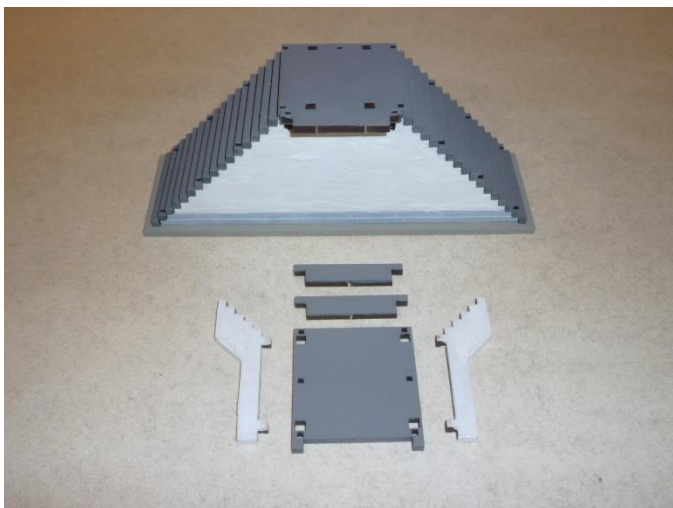
35.



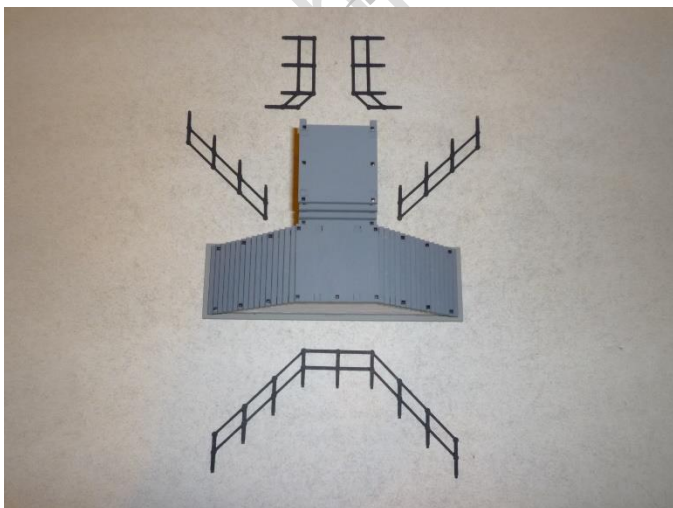
## 36. Main Staircase



## 37.

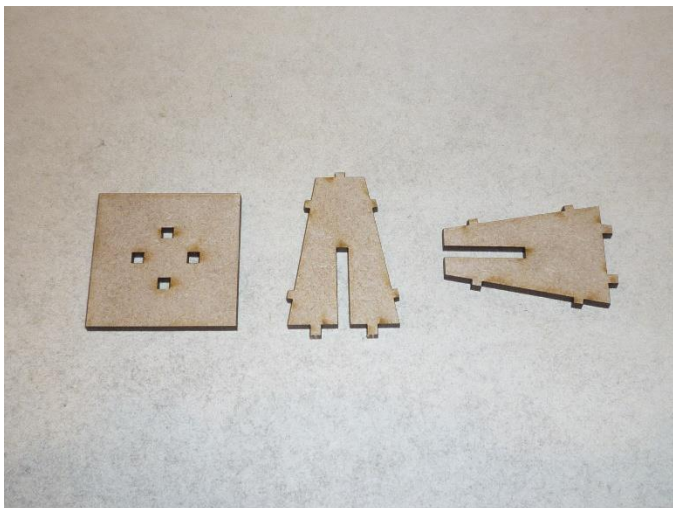


## 38.

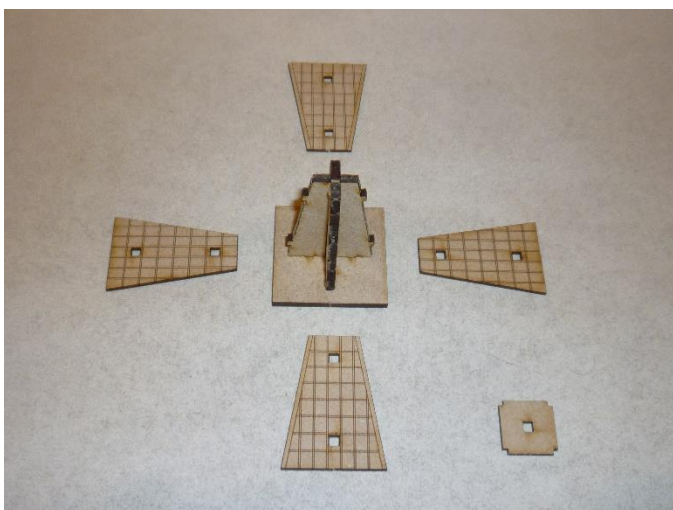




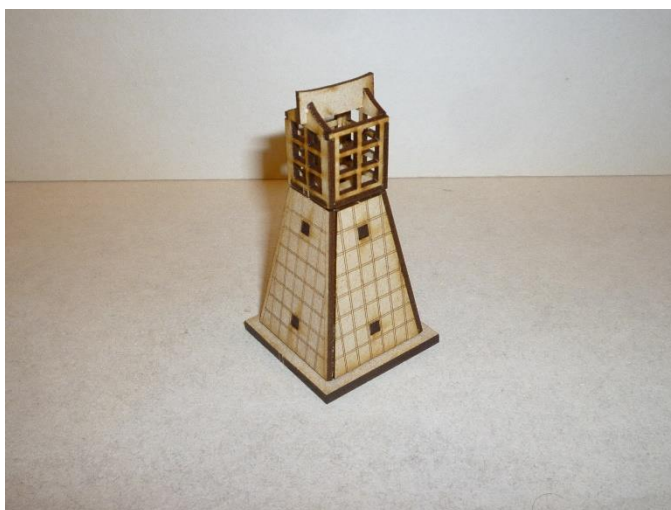
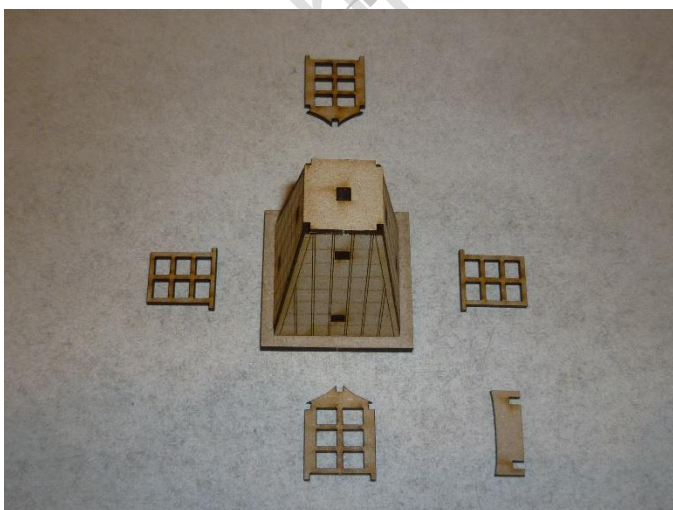
## 39. Light Beacon



## 40.

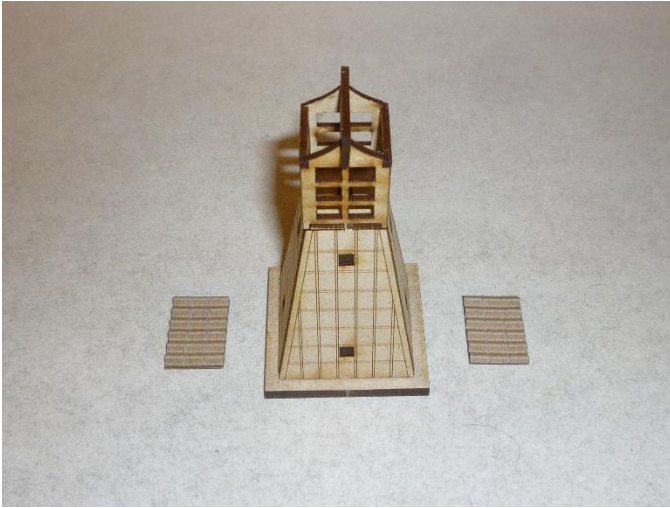


## 41.



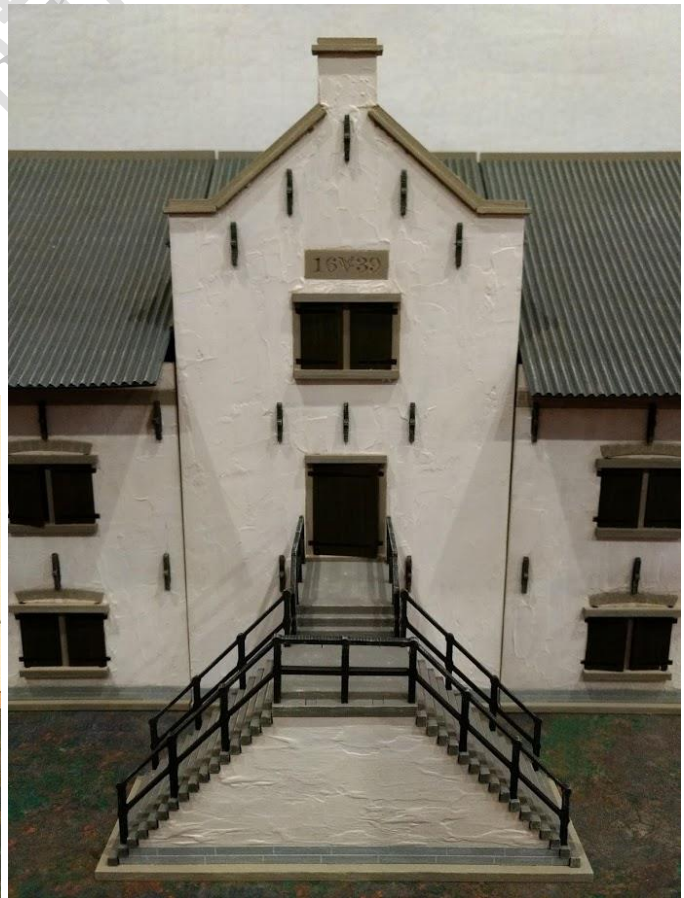
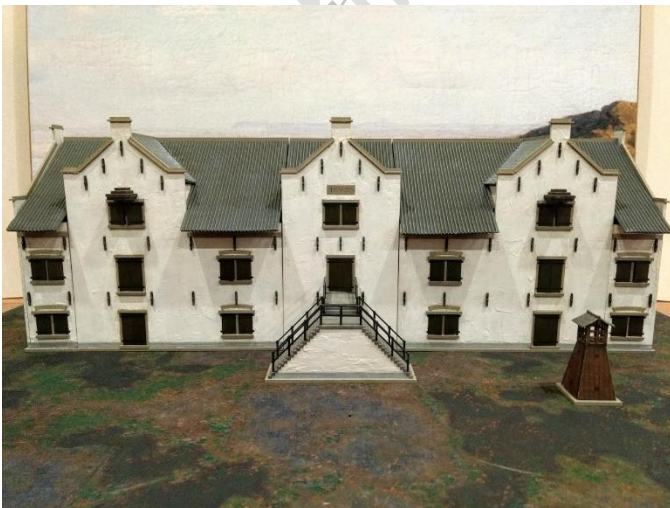


42.



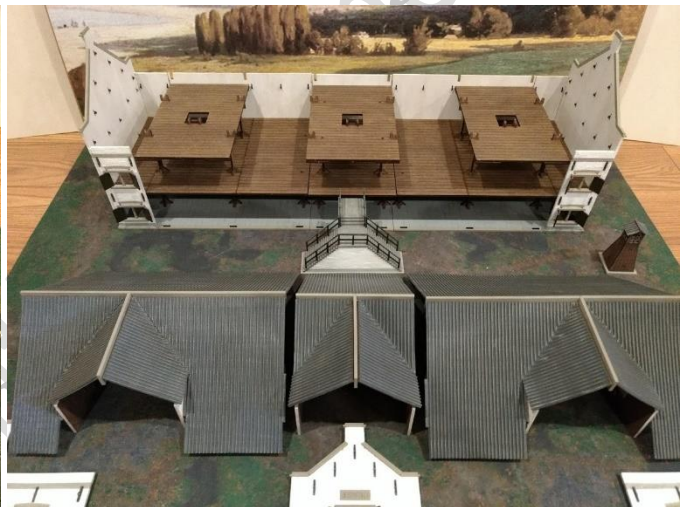
If you ever experience problems or difficulties in finishing this kit don't become desperate! Just send me an email at [thingsfromthebasement@gmail.com](mailto:thingsfromthebasement@gmail.com) and I will help you get it done. Having designed the kit and then providing an instruction for everyone to understand is probably the hardest part of the whole project. I am ready for every kind of feedback to improve kit and instructions. I just need to know!

**Photos of the finished kit:**





# FEUDAL JAPAN





# FEUDAL JAPAN

