

Inspired by



★ **Buildings On A Budget** by
Things from the Basement, LLC
Dollhouse & Wargaming Miniatures

Frostgrave – Fantasy Wargames in the Frozen City by Joseph A. McCullough and its supplements are published by Osprey Publishing. This kit is inspired by the descriptions found in these works.

Mausoleum

Please read the instructions before starting construction.

When opening the kit you will notice the smell of burned wood. This is because the parts are laser-cut, which literally means a very tight light beam burns through the material. You may also notice some soot at the cut edges. The amount of soot depends on the material used. You can considerably reduce it by gently wiping at least the bigger and easy to reach edges with a soft cloth or household tissue.

PVA or equivalent glue will be required to glue parts together. Give glue enough time to dry. Wipe away any excess glue immediately using a fine cloth or the tip of a toothpick. A sharp hobby knife is needed to remove parts from the sheet. Be careful and always cut away from your body. Fine sand paper may be useful to clean these areas or any tight fitting joints. Clamps, pegs and elastic bands may help during the construction of the kit. Make sure that the parts are aligned correctly before applying any of these tools.

General pre-assembly preparations

You will achieve the best results in finishing this kit when you follow the steps listed below. Always double check with the provided pictures before gluing parts together and moving on to the next step.

Please keep in mind that - in general - engraved sides of parts are considered “outside”; not engraved sides are “inside” or positioned less visible once the kit is finished.

Inspired by



★ **Buildings On A Budget** by

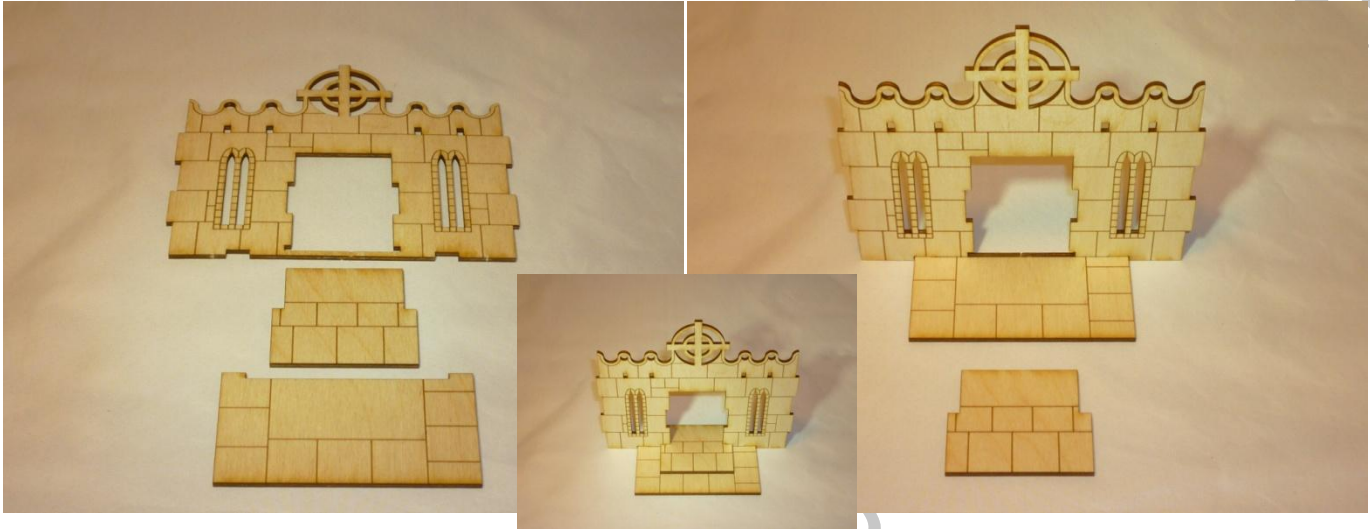
Things from the Basement, LLC

Dollhouse & Wargaming Miniatures

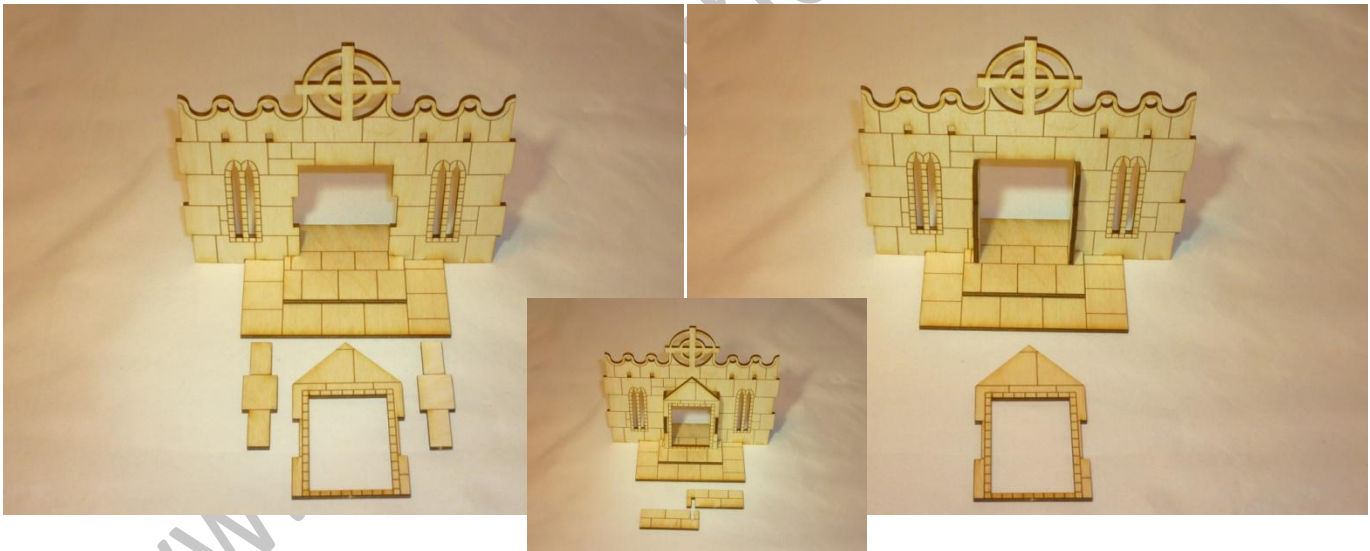
Assembly

Stairs and walls:

Glue the stairs on the wall as shown in the picture. Make sure to retain right angles.



Add the two side wall of the doorway. Make sure to retain right angles. Then add door opening.



Inspired by



Buildings On A Budget by
Things from the Basement, LLC
Dollhouse & Wargaming Miniatures

Form roof of doorway by sliding and gluing to roof parts together as shown. Then glue in place.



Now glue four roof supports into the slots provided in the wall.



Repeat this step for the remaining three walls.

Inspired by



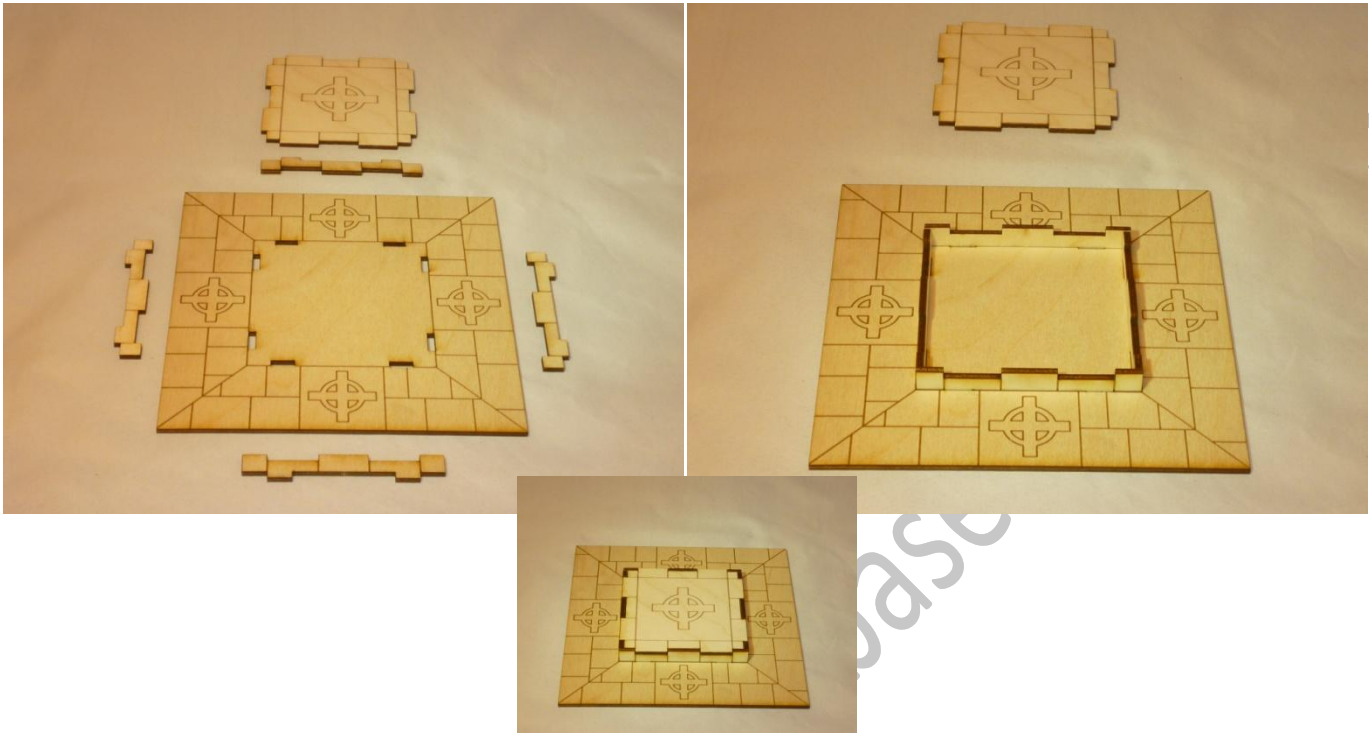
Buildings On A Budget by

Things from the Basement, LLC

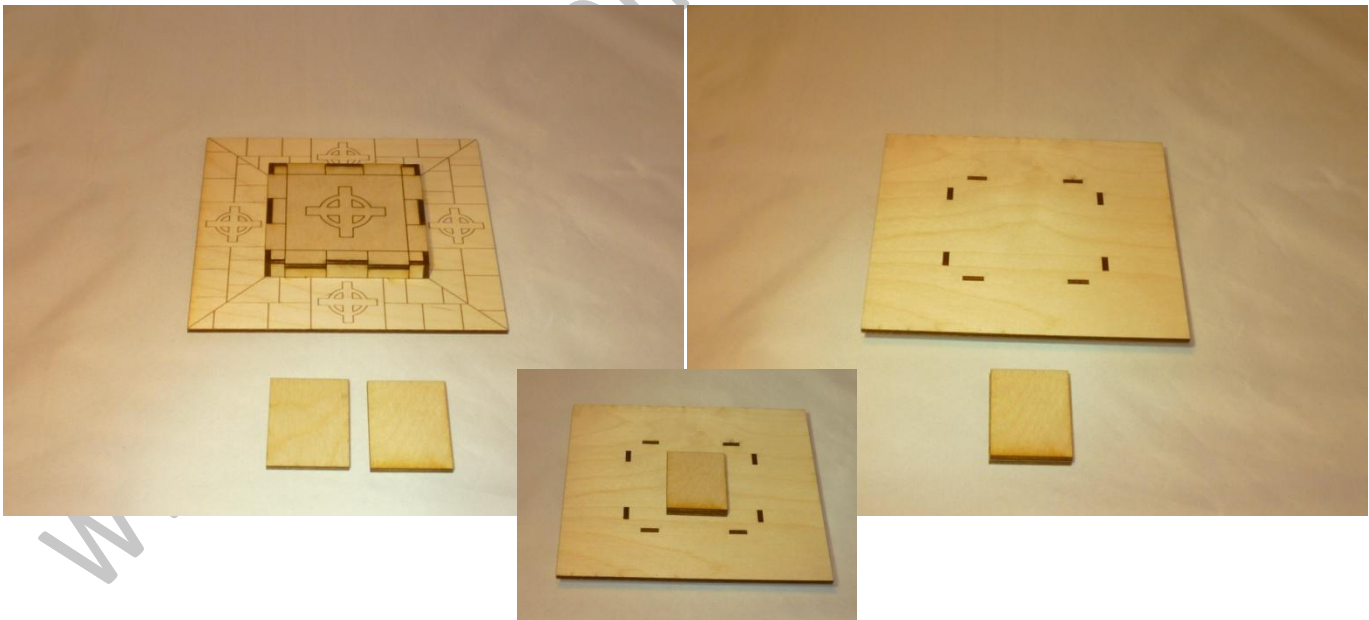
Dollhouse & Wargaming Miniatures

Floor base:

Glue the four side walls of the pedestal on the base. Then add pedestal in place.



Take two unused pieces of the wooden parts sheets (e.g. door openings) and glue them together. Then glue them on the underside of the floor base to provide additional support.



Inspired by



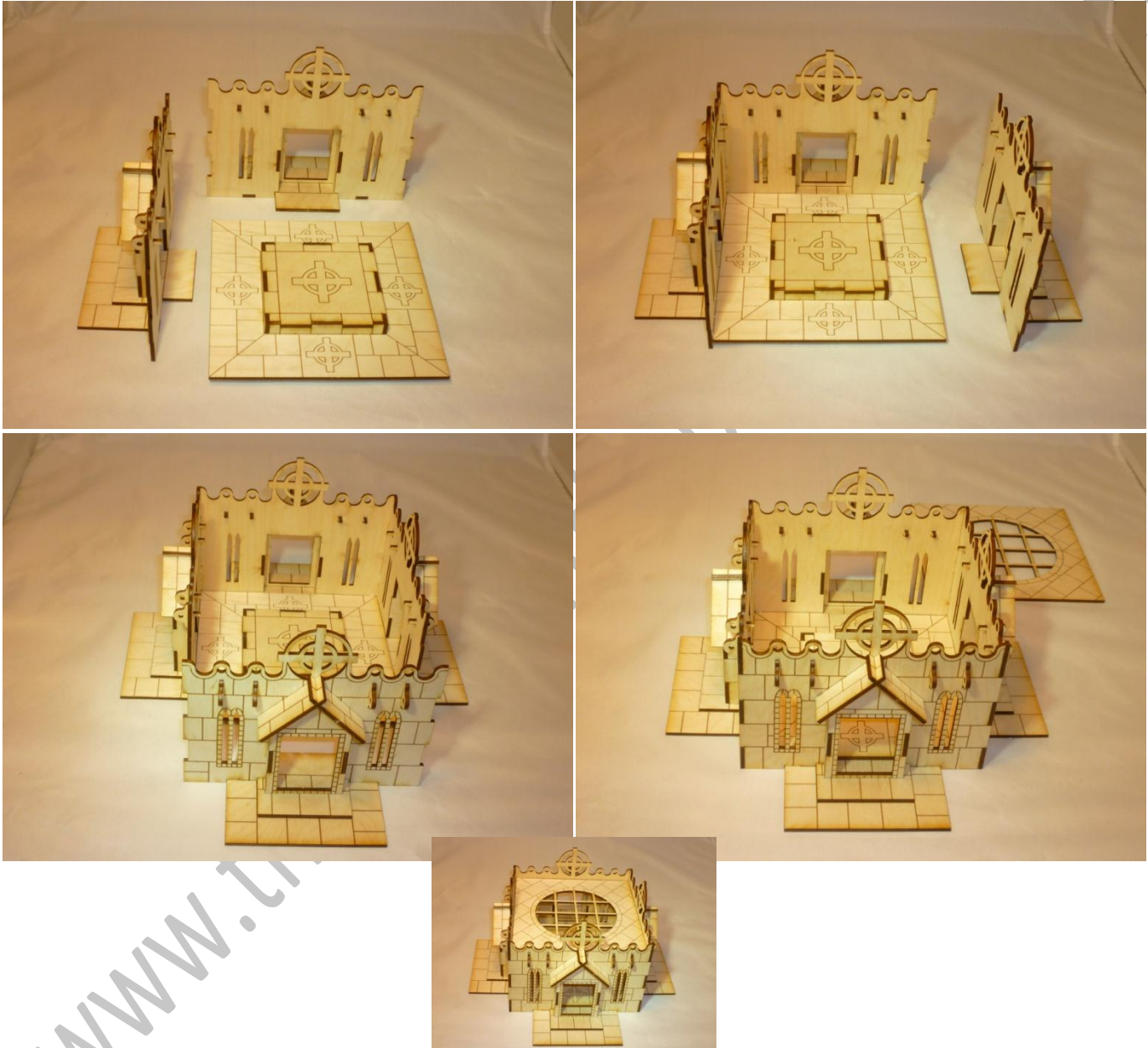
★ **Buildings On A Budget** by

Things from the Basement, LLC

Dollhouse & Wargaming Miniatures

Take two previously completed wall sections and glue them together. Then glue the floor base in place. Add the remaining two wall sections - one at a time – to complete the structure. Make sure to retain right angles and a tight fit. Use some elastics to hold the parts together until the glue has dried.

Put the roof onto the supports protruding from the inside. No glue required, roof can be taken off to reach the interior of the building.



Inspired by



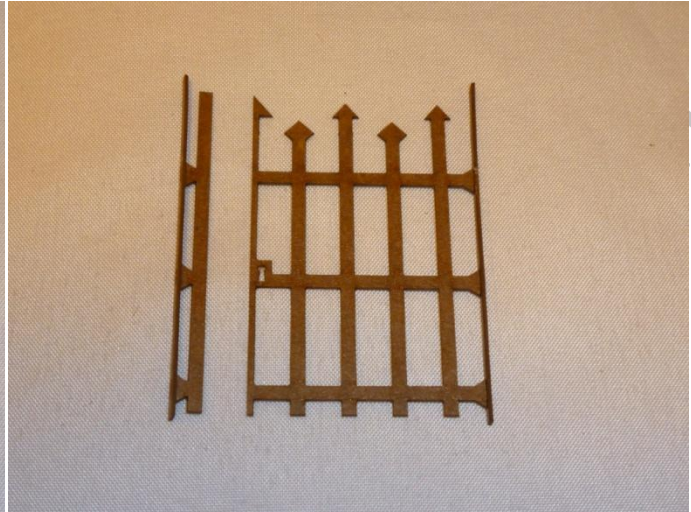
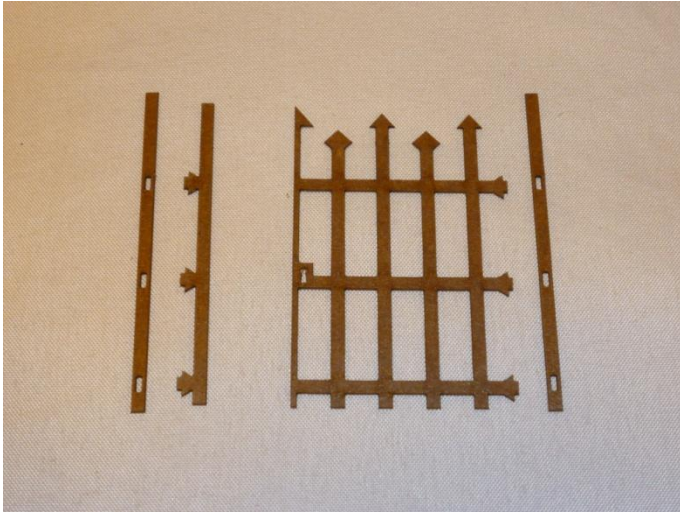
★ **Buildings On A Budget** by

Things from the Basement, LLC

Dollhouse & Wargaming Miniatures

Final stuff:

Glue the iron door parts into the brackets as shown. Repeat four times.



Then glue door structures into the four doorways.



For an even more impressive appearance you may want to add a surrounding iron fence. It features the same design as the mausoleum doors and is sold separately at www.thingsfromthebasement.com. You will need two sets for a complete enclosure of the mausoleum.

If you ever experience problems or difficulties in finishing this kit don't become desperate! Just send me an email at thingsfromthebasement@gmail.com and I will help you get it done. Having designed the kit and then providing an instruction for everyone to understand is probably the hardest part of the whole project. I am ready for every kind of feedback to improve kit and instructions. I just need to know!

Inspired by

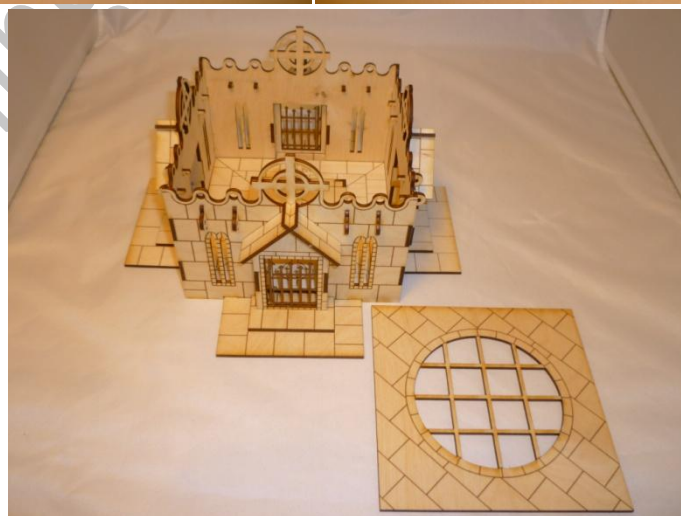
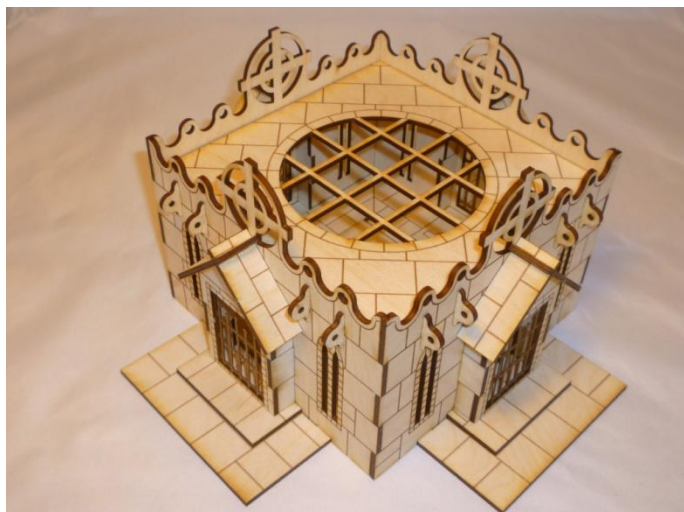


Buildings On A Budget by

Things from the Basement, LLC

Dollhouse & Wargaming Miniatures

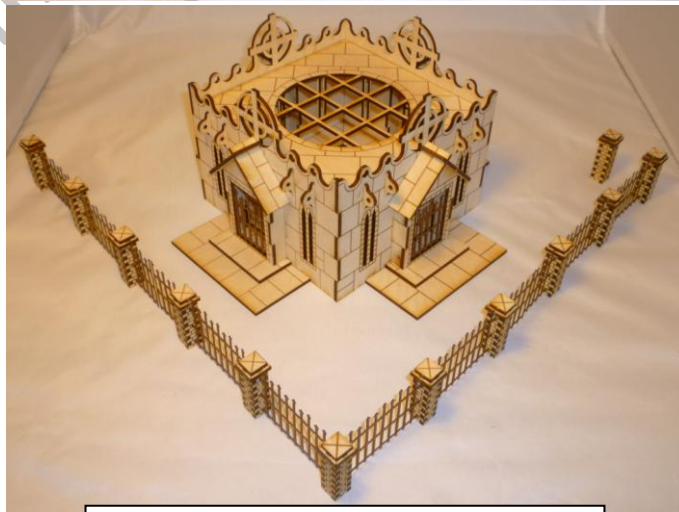
Photos of finished kit:



Inspired by



★ **Buildings On A Budget** by
Things from the Basement, LLC
Dollhouse & Wargaming Miniatures



Mausoleum with 1 set of Iron Fence