

Frostgrave – Fantasy Wargames in the Frozen City by Joseph A. McCullough and its supplements are published by Osprey Publishing. This kit is inspired by the descriptions found in these works.

Shipwreck

Please read the instructions before starting construction.

When opening the kit you will notice the smell of burned wood. This is because the parts are laser-cut, which literally means a very tight light beam burns through the material. You may also notice some soot at the cut edges. The amount of soot depends on the material used. You can considerably reduce it by gently wiping at least the bigger and easy to reach edges with a soft cloth or household tissue.

PVA or equivalent glue will be required to glue parts together. Give glue enough time to dry. Wipe away any excess glue immediately using a fine cloth or the tip of a toothpick. A sharp hobby knife is needed to remove parts from the sheet. Be careful and always cut away from your body. Fine sand paper may be useful to clean these areas or any tight fitting joints. Clamps, pegs and elastic bands may help during the construction of the kit. Make sure that the parts are aligned correctly before applying any of these tools.

General pre-assembly preparations

You will achieve the best results in finishing this kit when you follow the steps listed below. Always double check with the provided pictures before gluing parts together and moving on to the next step.

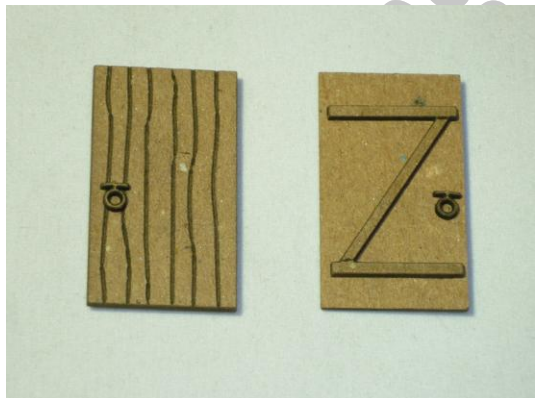
Please keep in mind that - in general - engraved sides of parts are considered “outside”; not engraved sides are “inside” or positioned less visible once the kit is finished.

Assembly of doors and shutters:

Glue supporting bracket on inside (i.e. **not** engraved side) of door or shutter (only if applicable).

Glue handles on inside **and** outside of door (only if applicable).

Glue window frame on inside **and** outside of door (only if applicable).



Preparation of walls:

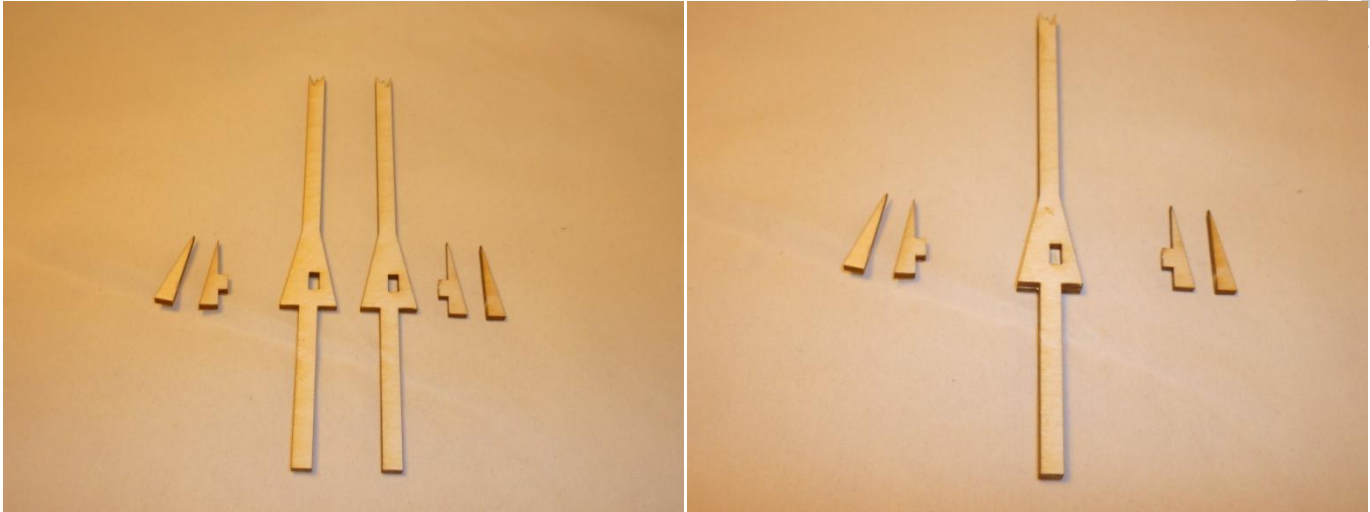
Glue door and window frames on inside (i.e. **not** engraved side) of walls where openings are. Frames match the size of the opening and will fit right around it.



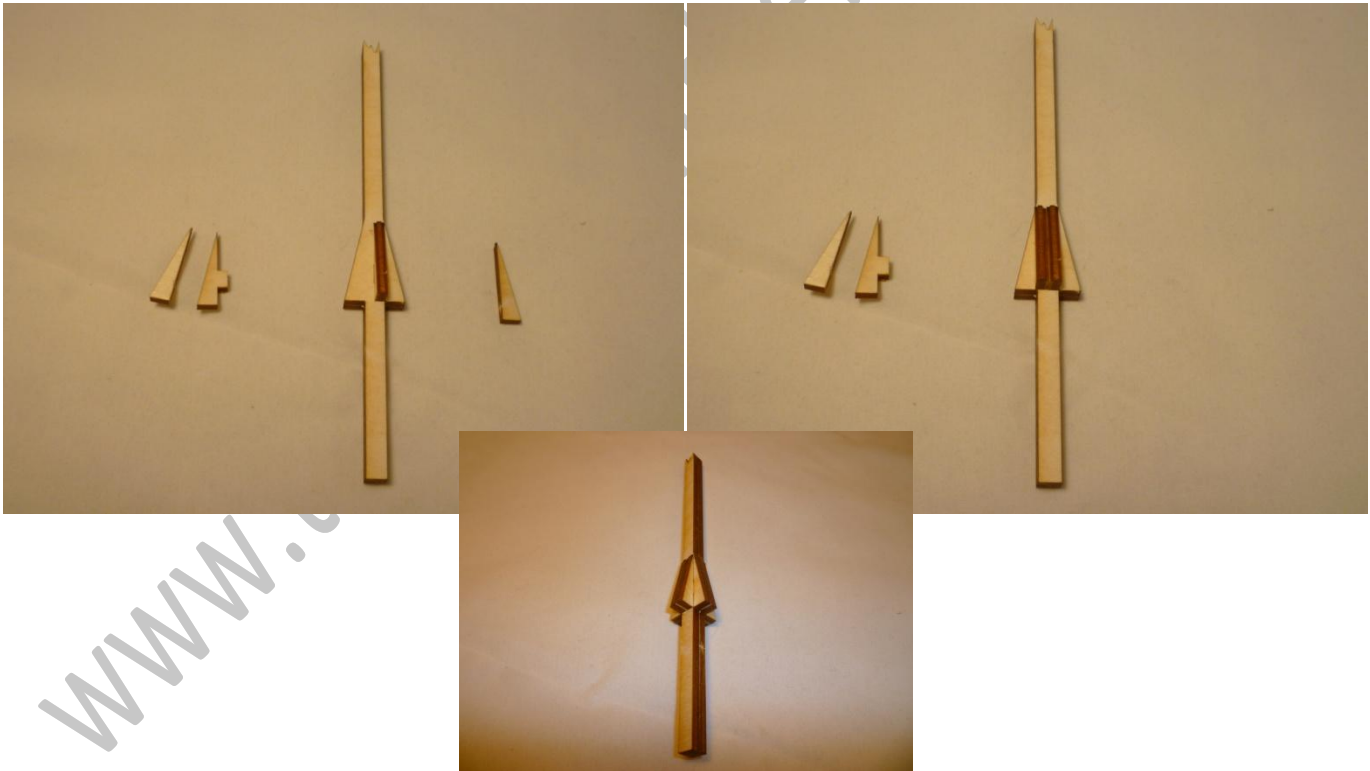
Assembly

Mast:

Glue together the two main parts of the mast. Make sure to retain right angles.



Then glue support part into the slot on one side, followed by second support part (without slot).



Repeat for other side. Set aside and let dry.

Inspired by



★ **Buildings On A Budget** by

Things from the Basement, LLC

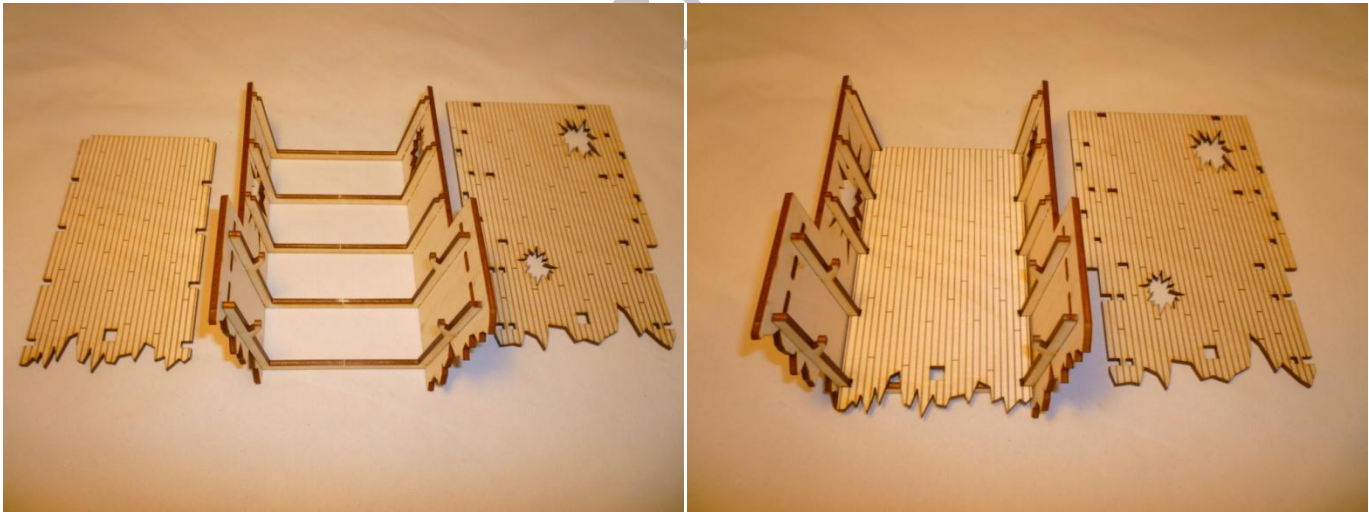
Dollhouse & Wargaming Miniatures

Hull:

Arrange parts as shown in picture. Glue one side of hull onto the bulkheads as shown. Make sure to push the hull all the way through. The “tips” of the bulkheads should protrude outside the hull. Repeat with other side.



Glue the lower deck into the hull. Then glue upper deck into the hull.

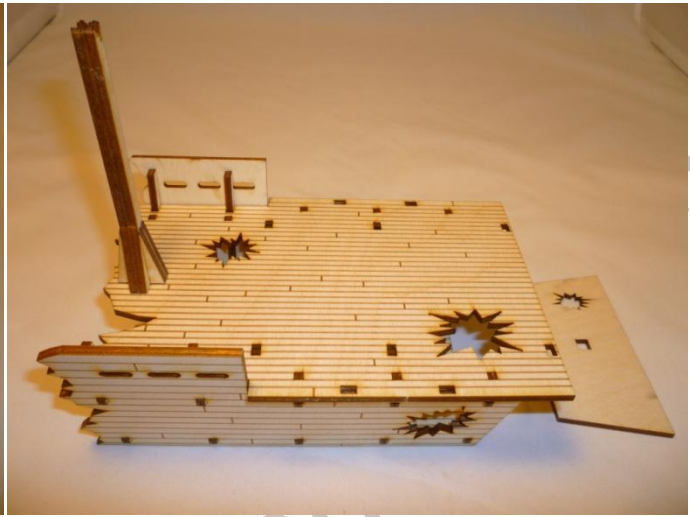


Inspired by

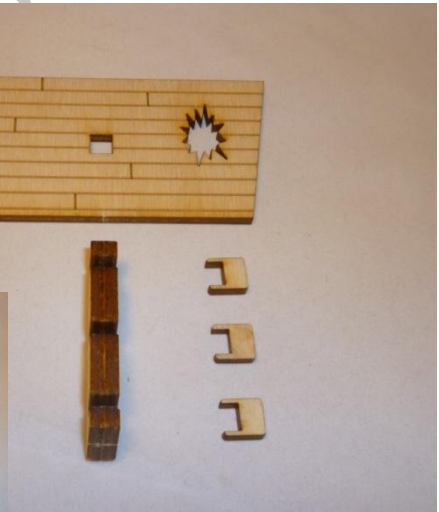
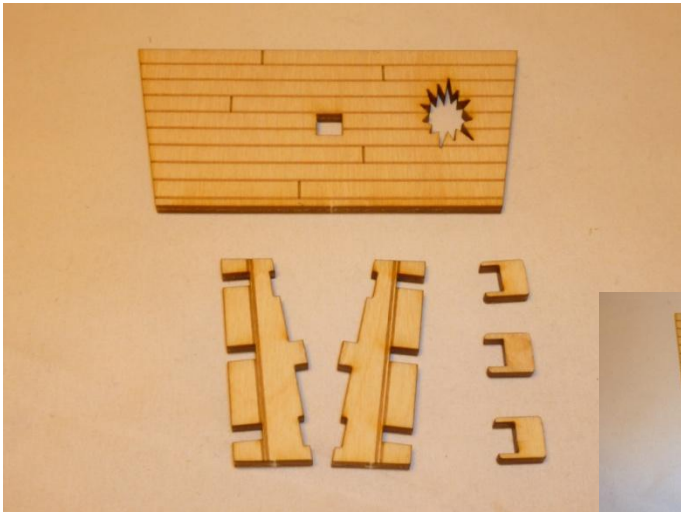


Buildings On A Budget by
Things from the Basement, LLC
Dollhouse & Wargaming Miniatures

Glue the completed mast into the hull. Make sure to push it all the way through.



Glue together the two main parts of the rudder. Glue the three supports into the slots as shown.



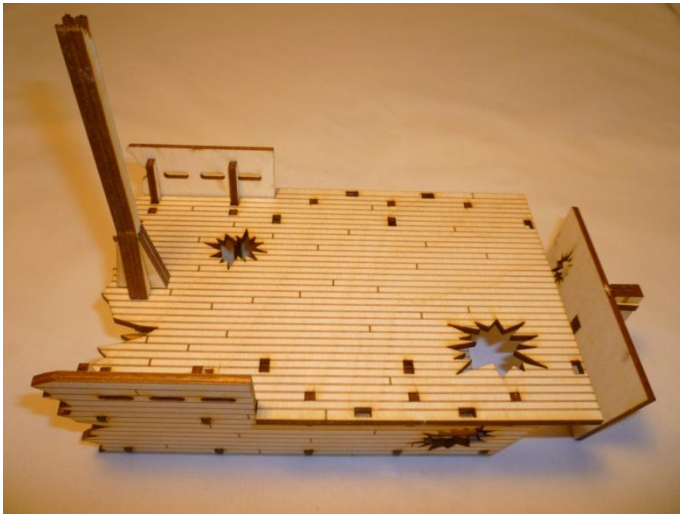
Glue the completed rudder into the rear.

Inspired by



Buildings On A Budget by
Things from the Basement, LLC
Dollhouse & Wargaming Miniatures

Complete the hull by gluing the rear into place as shown, aligning it with the sides of the hull.



Now glue the braces onto the sides of the hull. The braces match the destructions on the hull.
Do the same on the rear by placing the braces behind the rudder.



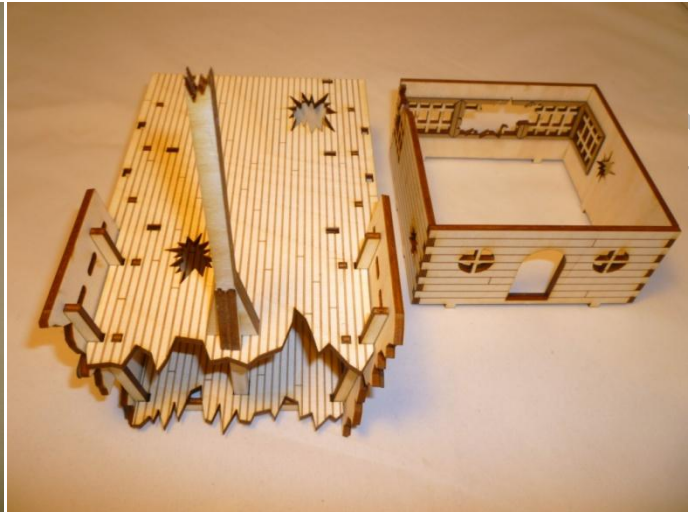
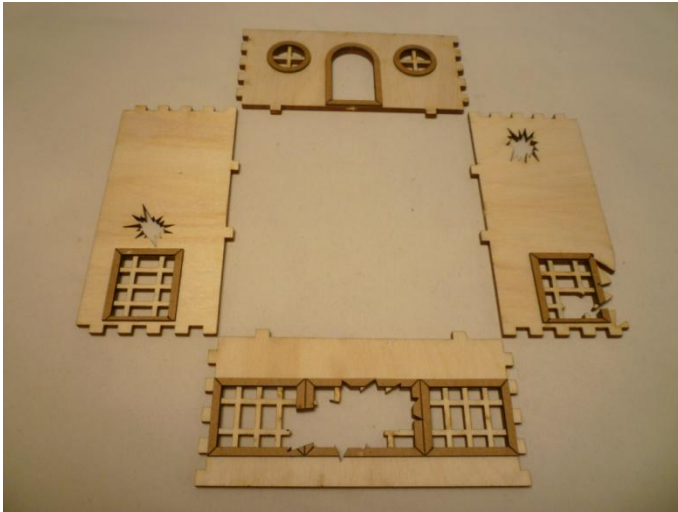
Inspired by



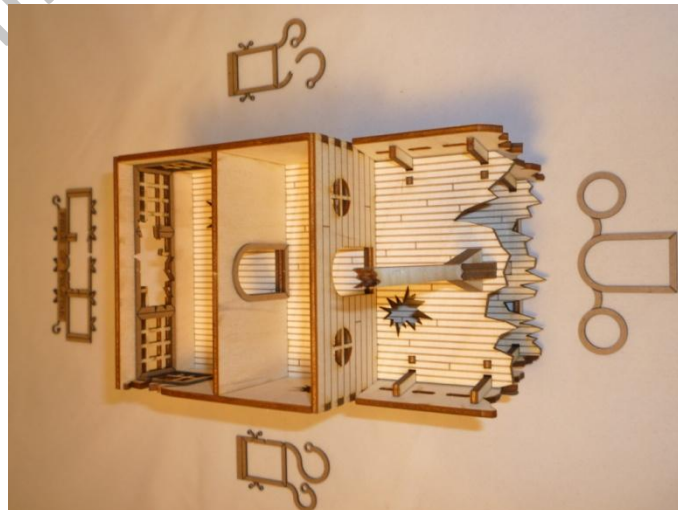
★ **Buildings On A Budget** by
Things from the Basement, LLC
Dollhouse & Wargaming Miniatures

Cabin:

Glue the four walls together as shown. Then glue the cabin onto the upper deck and add the internal wall.



Glue the outer trim onto the cabin walls as shown, starting with the front and back.



Inspired by

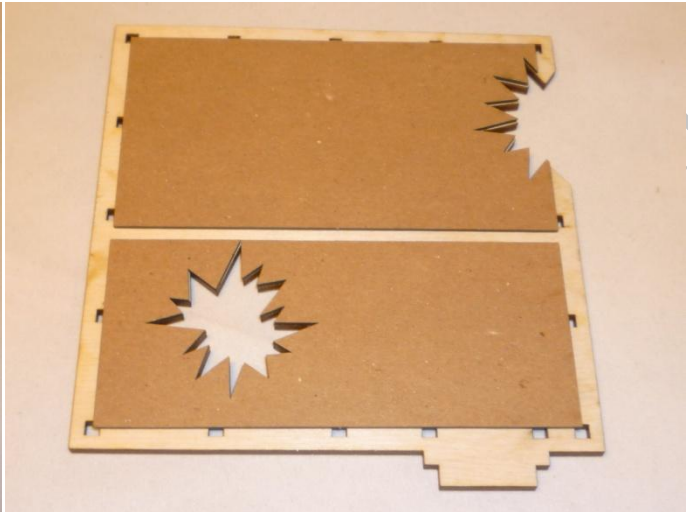
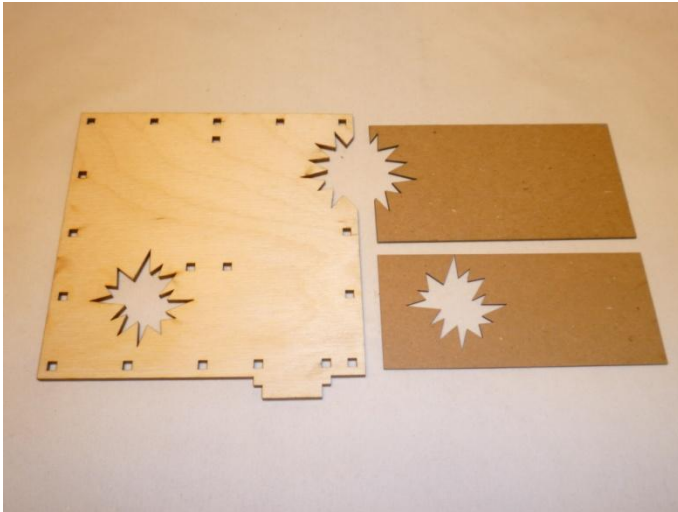


Buildings On A Budget by

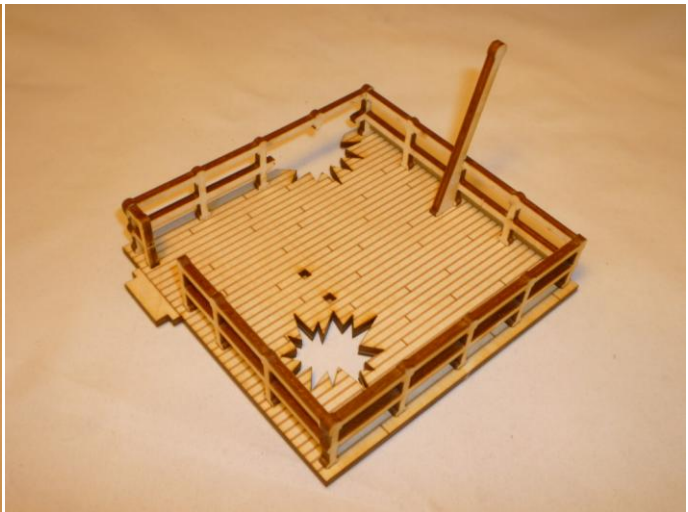
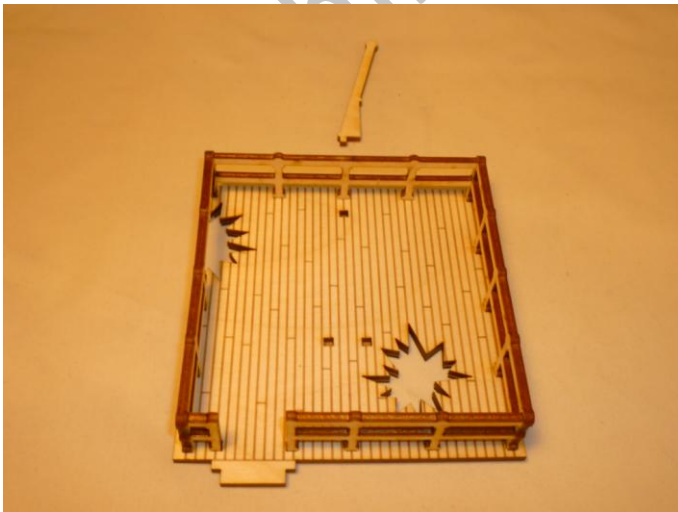
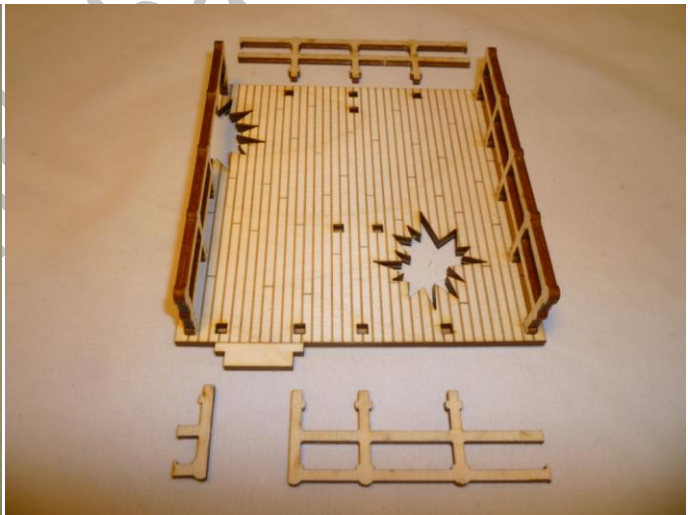
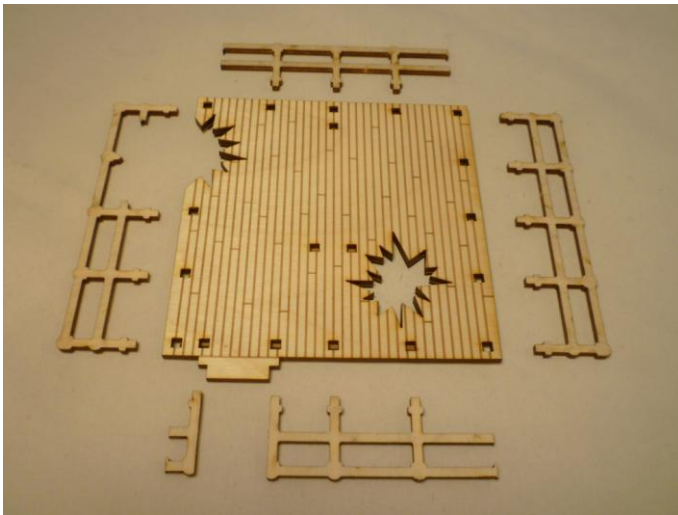
Things from the Basement, LLC

Dollhouse & Wargaming Miniatures

Glue the two supports on the back of the cabin roof. They match the destruction on the roof and make sure the roof can be opened and stay securely in place when closed.



Glue the railing in place starting with the two side pieces followed by the remaining pieces. Glue the flag mast in place.



Inspired by



★ **Buildings On A Budget** by

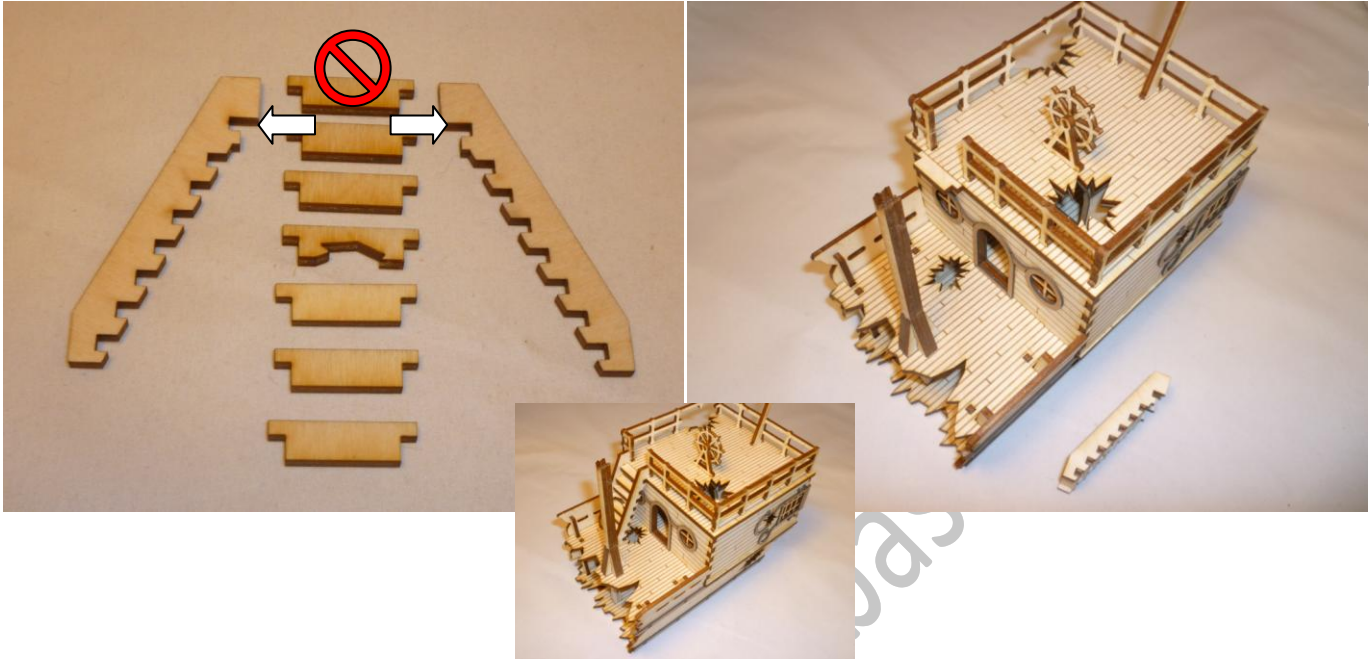
Things from the Basement, LLC

Dollhouse & Wargaming Miniatures

Stairs:

Arrange parts as shown in picture. Glue the steps into place as shown, **NOT** using the uppermost slots.

Glue the finished stairs to the cabin roof using the uppermost slots.



Final stuff:

Add prepared doors as desired.

If you ever experience problems or difficulties in finishing this kit don't become desperate! Just send me an email at thingsfromthebasement@gmail.com and I will help you get it done. Having designed the kit and then providing an instruction for everyone to understand is probably the hardest part of the whole project. I am ready for every kind of feedback to improve kit and instructions. I just need to know!

Inspired by

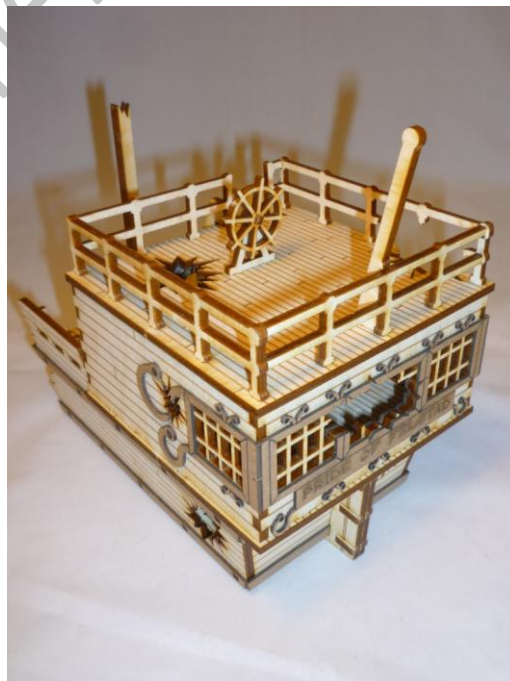
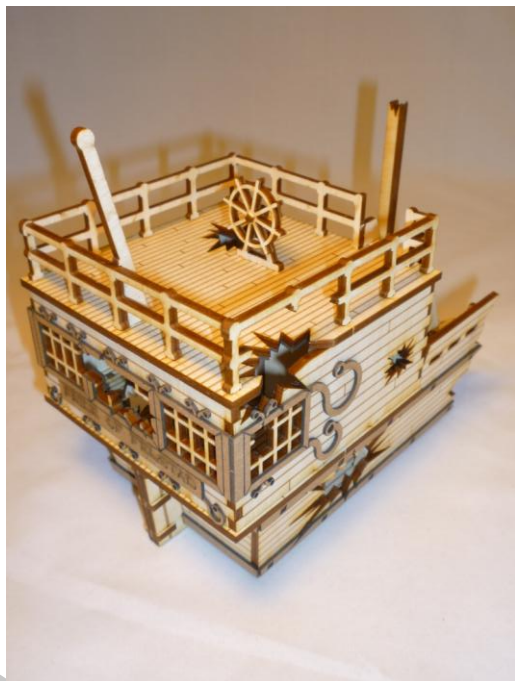
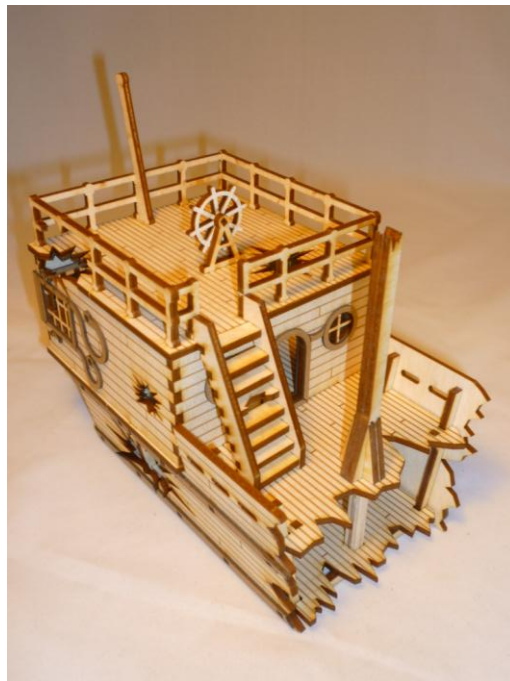
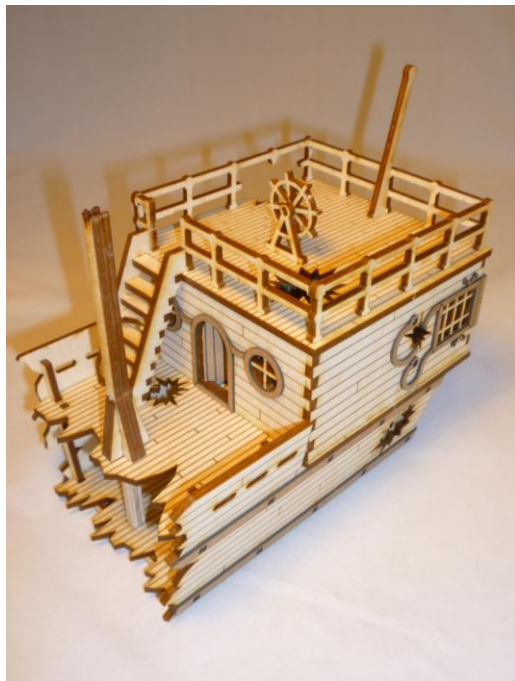


★ **Buildings On A Budget** by

Things from the Basement, LLC

Dollhouse & Wargaming Miniatures

Photos of finished kit:



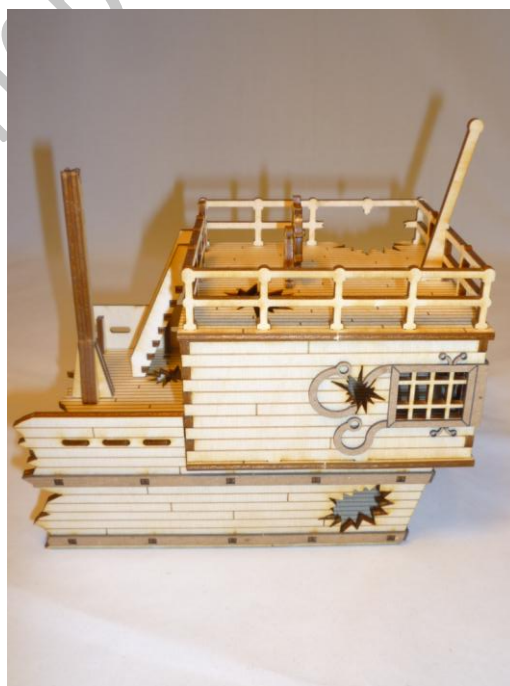
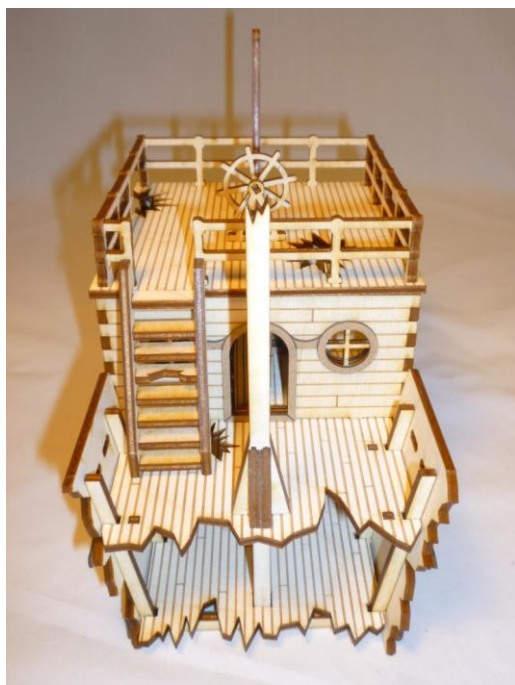
Inspired by



Buildings On A Budget by

Things from the Basement, LLC

Dollhouse & Wargaming Miniatures



Inspired by



—★ **Buildings On A Budget** by

Things from the Basement, LLC

Dollhouse & Wargaming Miniatures

