

The Legend of Riverfield

Stables

Please read the instructions before starting construction.

When opening the kit you will notice the smell of burned wood. This is because the parts are laser-cut, which literally means a very tight light beam burns through the material. You may also notice some soot at the cut edges. The amount of soot depends on the material used. You can considerably reduce it by gently wiping at least the bigger and easy to reach edges with a soft cloth or household tissue.

PVA or equivalent glue will be required to glue parts together. Give glue enough time to dry. Wipe away any excess glue immediately using a fine cloth or the tip of a toothpick. A sharp hobby knife is needed to remove parts from the sheet. Be careful and always cut away from your body. Fine sand paper may be useful to clean these areas or any tight fitting joints. Clamps, pegs and elastic bands may help during the construction of the kit. Make sure that the parts are aligned correctly before applying any of these tools.

General pre-assembly preparations

You will achieve the best results in finishing this kit when you follow the steps listed below. Always double check with the provided pictures before gluing parts together and moving on to the next step.

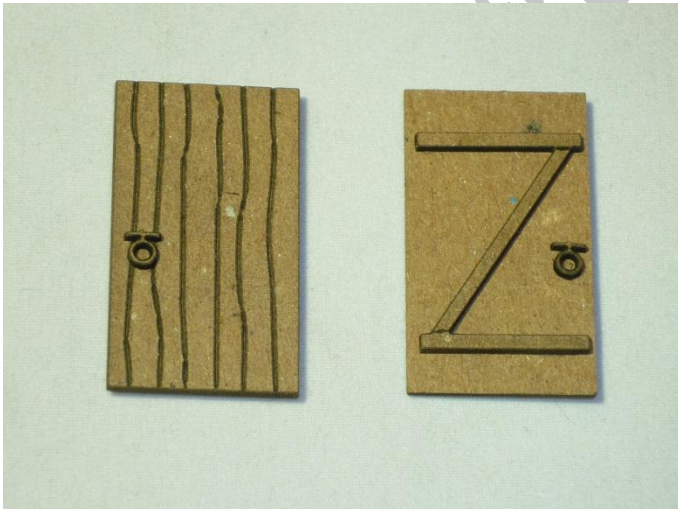
Please keep in mind that - in general - engraved sides of parts are considered "outside"; not engraved sides are "inside" or positioned less visible once the kit is finished.

Assembly of doors and shutters:

Glue supporting bracket on inside (i.e. **not** engraved side) of door or shutter (only if applicable).

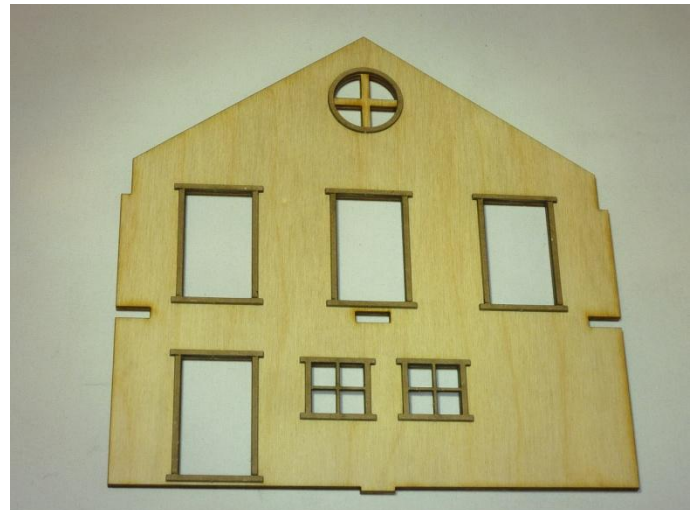
Glue handles on inside **and** outside of door (only if applicable).

Glue window frame on inside **and** outside of door (only if applicable).



Preparation of walls:

Glue door and window frames on inside (i.e. **not** engraved side) of walls where openings are. Frames match the size of the opening and will fit right around it.

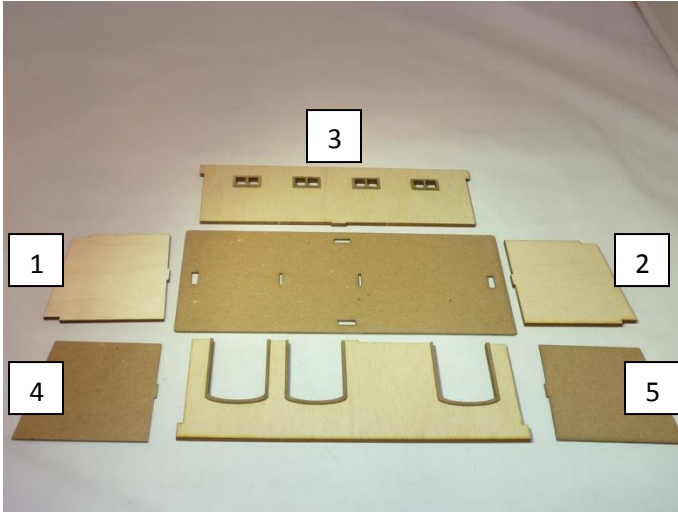


The Legend of Riverfield

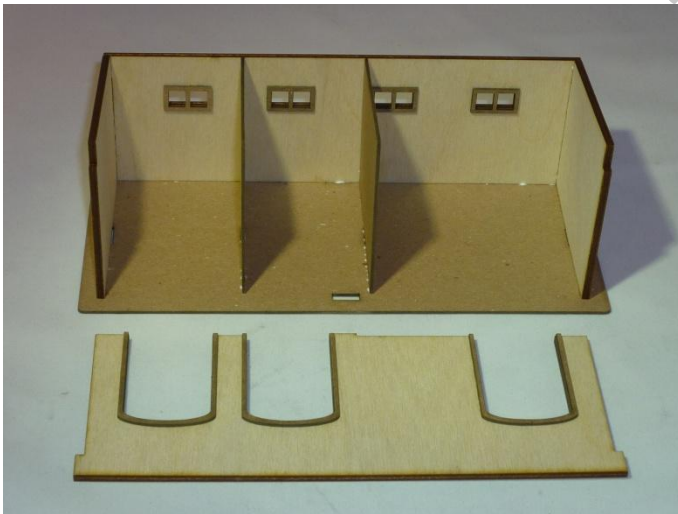
Assembly

Stables:

Glue the walls on the base in the order specified in the picture. Make sure to retain right angles.



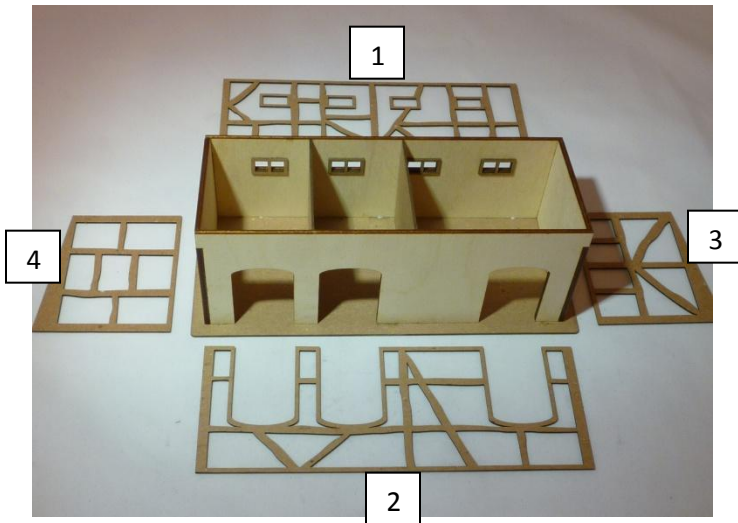
Add the remaining front wall. Make sure to retain right angles. Use elastic bands or clamps to hold pieces in place. Let dry thoroughly.





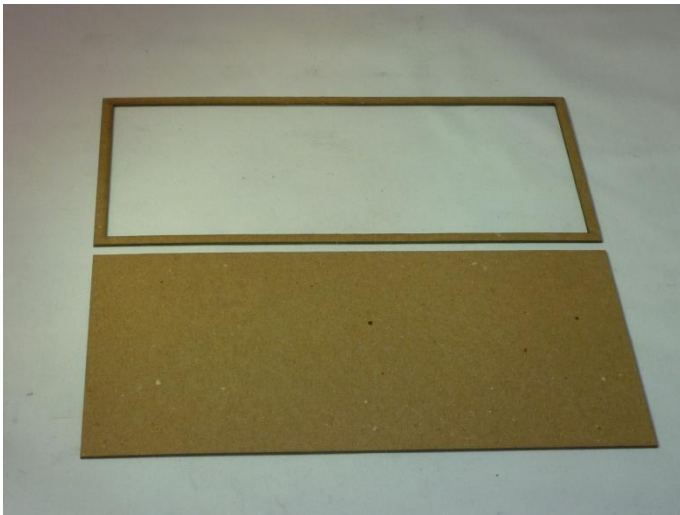
The Legend of Riverfield

Add framework in the order specified in the picture. End result should fit right around the walls.



Roof:

Glue the support on the roof aligning on a long side.



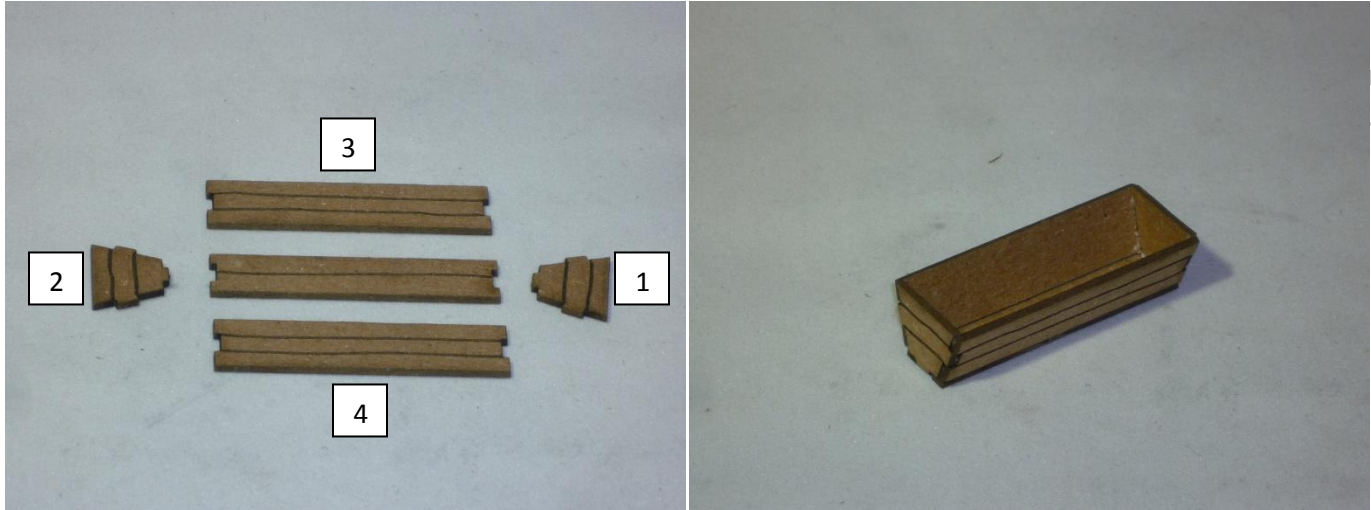


The Legend of Riverfield

Final stuff:

Add prepared doors and roof. Don't glue roof in place to be able to play inside the building.

Glue together horse trough in the order specified in the picture.



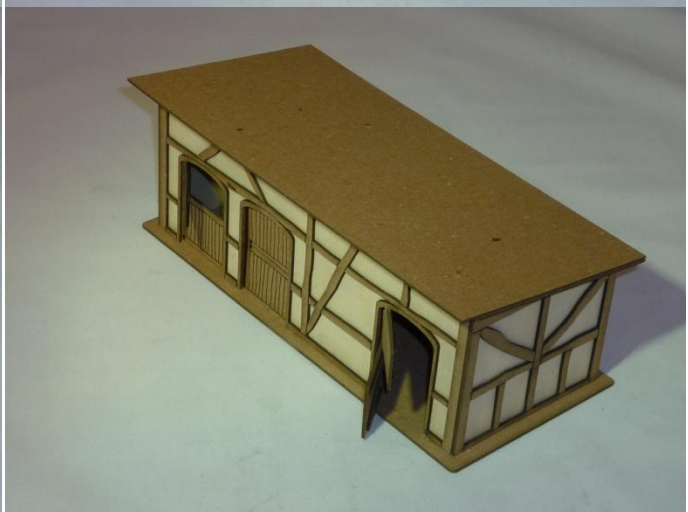
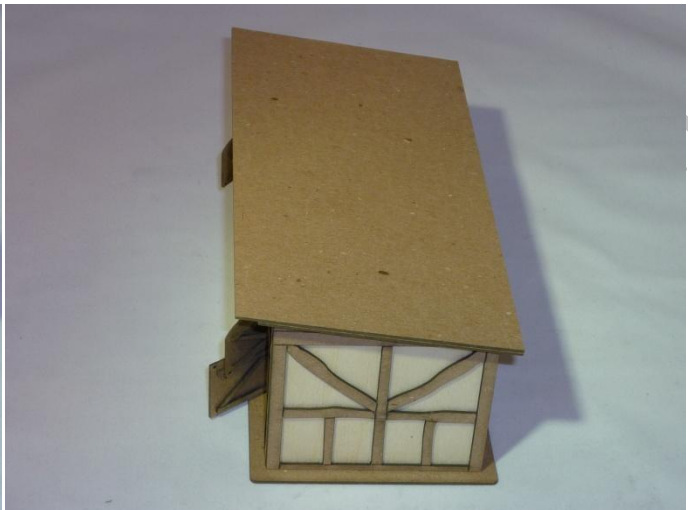
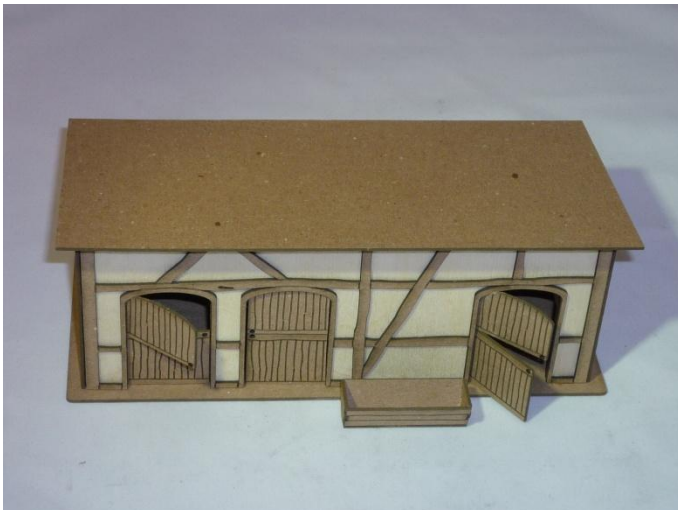
For an even more detailed look you may want to add roof tiles. Different styles are available and sold separately at www.thingsfromthebasement.com.

If you ever experience problems or difficulties in finishing this kit don't become desperate! Just send me an email at thingsfromthebasement@gmail.com and I will help you get it done. Having designed the kit and then providing an instruction for everyone to understand is probably the hardest part of the whole project. I am ready for every kind of feedback to improve kit and instructions. I just need to know!



The Legend of Riverfield

Photos of finished kit:



The Legend of Riverfield

